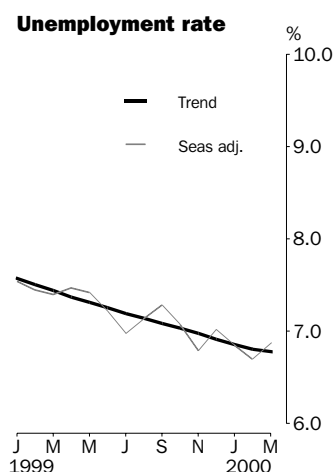
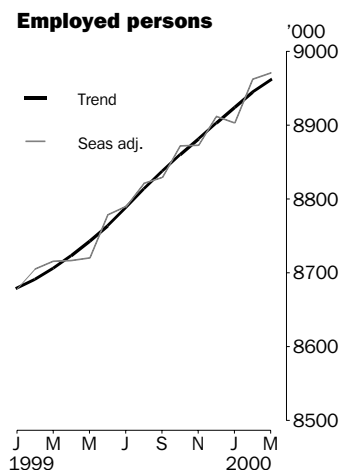




# LABOUR FORCE

AUSTRALIA  
PRELIMINARY

EMBARGO: 11:30AM (CANBERRA TIME) THURS 6 APR 2000



## MARCH KEY FIGURES

### TREND

	Feb 2000	Mar 2000	monthly change
Employed persons ('000)	8 944.9	8 962.0	0.2 %
Unemployed persons ('000)	653.4	651.0	-0.4 %
Unemployment rate (%)	6.8	6.8	0.0 pts
Participation rate (%)	63.4	63.5	0.0 pts

### SEASONALLY ADJUSTED

	Feb 2000	Mar 2000	monthly change
Employed persons ('000)	8 962.4	8 970.7	8.3
Unemployed persons ('000)	643.5	661.8	18.3
Unemployment rate (%)	6.7	6.9	0.2 pts
Participation rate (%)	63.5	63.6	0.1 pts

## MARCH KEY POINTS

### TREND ESTIMATES

#### EMPLOYMENT

- has continued to rise steadily, reaching 8,962,000.

#### UNEMPLOYMENT

- has been falling since June 1998 to 651,000.

#### UNEMPLOYMENT RATE

- remained steady at 6.8%.

#### PARTICIPATION RATE

- increased slightly to 63.5%.

### SEASONALLY ADJUSTED ESTIMATES

#### EMPLOYMENT

- increased by 8,300 to 8,970,700. Full-time employment rose by 27,000 to 6,632,000 while part-time employment fell by 18,700 to 2,338,700.

#### UNEMPLOYMENT

- increased by 18,300 to 661,800. The number of persons looking for full-time work rose by 17,300 to 492,300 and persons looking for part-time work rose by 1,000 to 169,500.

#### UNEMPLOYMENT RATE

- increased by 0.2 percentage points to 6.9%. The male rate rose by 0.1 percentage point to 6.8% and the female rate rose by 0.2 percentage points to 7.0%.
- NSW 6.0% (5.8% last month); Vic 6.9% (6.6%); Qld 8.3% (7.7%); SA 7.9% (8.7%); WA 6.5% (6.3%); Tas 8.9% (8.6%).

#### PARTICIPATION RATE

- increased by 0.1 percentage point to 63.6%.

- For further information about these and related statistics, contact Mark Webb on 02 6252 6525 or Client Services in any ABS office as shown on the back cover of this publication.

# NOTES

FORTHCOMING ISSUES	<i>ISSUE</i>	<i>RELEASE DATE</i>
	April 2000	11 May 2000
	May 2000	08 June 2000
	June 2000	13 July 2000
	July 2000	10 August 2000
	August 2000	07 September 2000
	September 2000	12 October 2000



**FORTHCOMING CHANGES** The Labour Force Survey (LFS) questionnaire is being redesigned to better reflect current labour market phenomena and contemporary user needs. The new questionnaire is scheduled to be implemented in March and April 2001. More information is available in *Information Paper: Labour Force Survey Questionnaire Redesign* (Cat. no. 6294.0), which was released on 14 March 2000.



**ROUNDING** Estimates of monthly change shown on page 1 have been calculated using unrounded estimates, and may be different from, but are more accurate than, movements obtained from the rounded estimates. The graphs on page 1 also depict movements calculated from unrounded estimates.



**SAMPLING ERRORS** The estimates in this publication are based on a sample survey. Because the entire population is not enumerated, the published estimates and the movements derived from them are subject to sampling variability. Standard errors give a measure of this variability and appear on pages 30 and 31.

The 95% confidence intervals below provide another way of looking at the variability inherent in estimates from sample surveys. The interval bounded by the two limits is the 95% confidence interval. A 95% confidence interval indicates that we are 95% confident that the upper and lower limits enclose the true value of the estimate.

<i>SEASONALLY ADJUSTED DATA SERIES</i>	<i>MOVEMENTS FEBRUARY 2000 TO MARCH 2000</i>			
	<i>Monthly change</i>	<i>95% Confidence interval</i>		
Total employment	8 300	-27 700	to	44 300
Total unemployment	18 300	3 500	to	33 100
Unemployment rate	0.2 pts	0.0 pts	to	0.4 pts
Participation rate	0.1 pts	-0.1 pts	to	0.3 pts

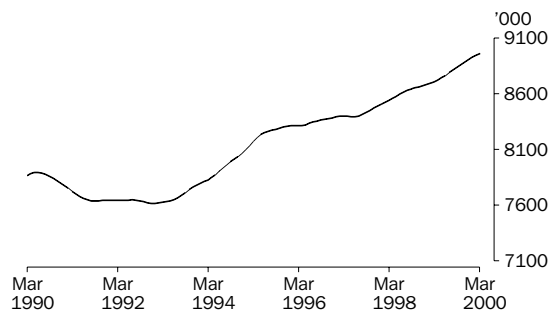


W. McLennan  
Australian Statistician

# PRINCIPAL LABOUR FORCE SERIES: Trend estimates

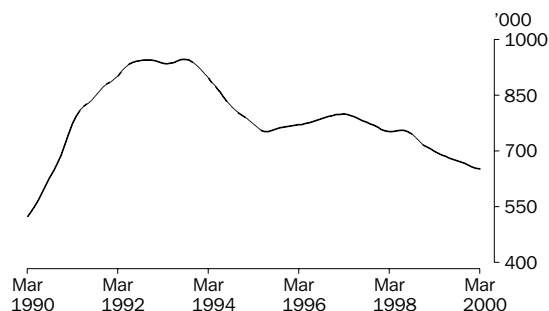
## EMPLOYED PERSONS

The trend estimate of employed persons rose strongly from a low of 7,615,300 in January 1993 until early 1996. The trend then continued to rise at a slower rate until May 1997. Since then, the trend estimate has shown stronger growth, to stand at 8,962,000 in March 2000.



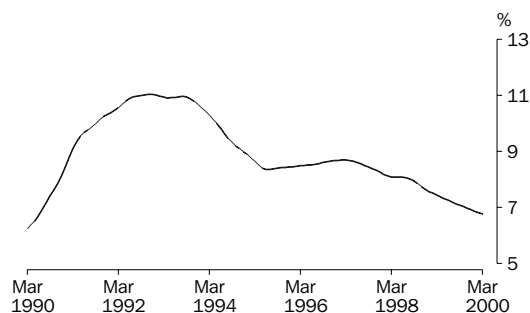
## UNEMPLOYED PERSONS

The trend estimate of unemployed persons peaked at 946,800 in September 1993, before falling rapidly to 751,900 in June 1995. The trend then rose slowly for almost two years to 799,400 in March 1997. Apart from a small rise in mid 1998, the trend estimate has been falling since March 1997, and was 651,000 in March 2000.



## UNEMPLOYMENT RATE

After reaching a high of 11.0% in mid 1992, the trend unemployment rate remained steady for twelve months, before falling rapidly to 8.3% in July 1995. The trend then rose slowly, reaching 8.7% in March 1997. Apart from a small increase in mid 1998, the trend estimate has since decreased, and stood at 6.8% in March 2000.

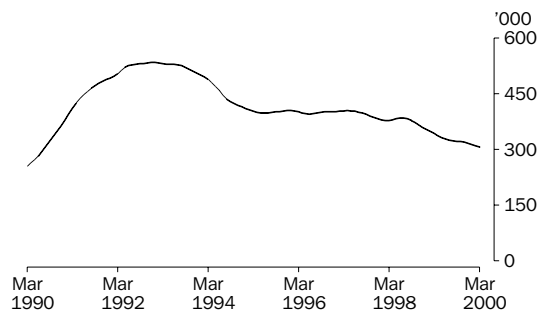


## UNEMPLOYED PERSONS: Trend estimates

### UNEMPLOYED MALES LOOKING FOR FULL TIME WORK

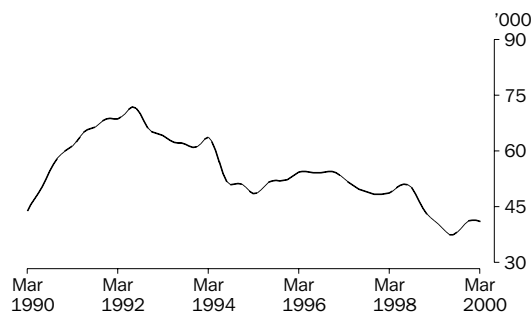
#### TOTAL

The trend estimate of unemployed males looking for full-time work peaked at 533,800 in December 1992, before falling rapidly to 397,700 in June 1995. The trend estimate then remained steady until April 1997. Apart from a small increase in mid 1998, the trend estimate has been falling since April 1997, and stood at 305,200 in March 2000.



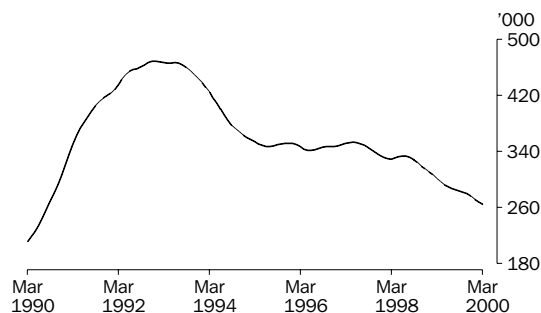
#### MALES AGED 15-19

From a peak of 71,800 in July 1992, the trend estimate of junior males looking for full-time work, although fluctuating, fell to 48,500 in March 1995. The trend estimate then rose until late 1996, before falling again. After a rise in early 1998, the trend fell to 37,400 in August 1999. Since then the trend has risen, and was 41,000 in March 2000.



#### MALES AGED 20 AND OVER

The trend estimate of the number of adult males looking for full-time work fell rapidly from a peak of 468,900 in January 1993, to 347,000 in July 1995. The trend then remained at this level until mid 1997, and has since fallen to 264,200 in March 2000.

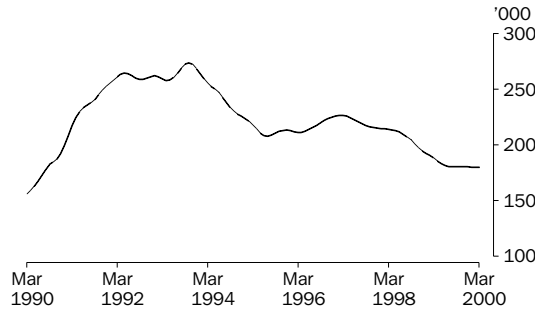


# UNEMPLOYED PERSONS: Trend estimates

## UNEMPLOYED FEMALES LOOKING FOR FULL TIME WORK

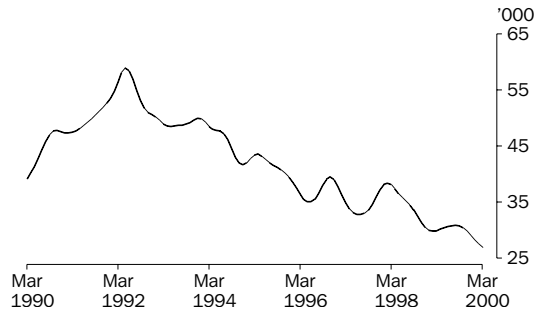
### TOTAL

After peaking at 273,700 in October 1993, the trend estimate of females looking for full-time work fell rapidly to 207,900 in July 1995. The trend estimate then rose, reaching 226,600 in March 1997, before falling to 180,200 in August 1999. Since then the trend has remained steady, and stood at 180,000 in March 2000.



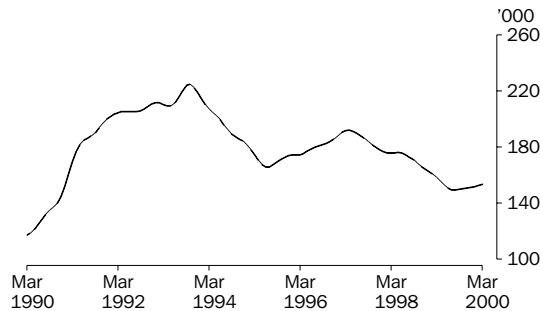
### FEMALES AGED 15-19

The trend estimate of junior females looking for full-time work has generally been falling since it peaked at 58,900 in May 1992, although it has fluctuated over the years. Apart from a small rise in mid 1999 the trend has been falling steadily from 38,400 in February 1998 to 26,800 in March 2000.



### FEMALES AGED 20 AND OVER

The trend estimates of adult females looking for full-time work fell rapidly from a peak of 224,600 in October 1993 to 165,800 in June 1995. The trend then rose steadily over the next two years, reaching 192,000 in April 1997, before falling to 149,300 in August 1999. Since then the trend has risen slightly, and was 153,200 in March 2000.



LABOUR FORCE STATUS (AGED 15 AND OVER): Original

Month	EMPLOYED.....			UNEMPLOYED.....			Labour force	Not in labour force	Civilian population aged 15 and over	Unemployment rate	Participation rate
	Full time	Part time	Total	Looking for f/t work	Looking for p/t work	Total					
	'000	'000	'000	'000	'000	'000					
MALES											
<b>1999</b>											
January	4 282.3	600.4	4 882.6	389.5	57.8	447.3	5 329.9	1 998.8	7 328.7	8.4	72.7
February	4 318.0	598.3	4 916.3	381.0	63.1	444.0	5 360.3	1 977.7	7 338.0	8.3	73.0
March	4 312.1	634.3	4 946.4	335.8	69.6	405.4	5 351.8	1 995.6	7 347.4	7.6	72.8
April	4 299.2	640.7	4 939.9	337.3	64.9	402.2	5 342.1	2 015.0	7 357.2	7.5	72.6
May	4 290.9	641.8	4 932.7	332.3	65.4	397.7	5 330.4	2 036.6	7 367.0	7.5	72.4
June	4 316.8	660.8	4 977.6	321.9	49.8	371.7	5 349.4	2 027.4	7 376.8	6.9	72.5
July	4 373.7	618.8	4 992.4	302.2	57.2	359.4	5 351.8	2 034.2	7 386.0	6.7	72.5
August	4 323.8	620.8	4 944.5	316.4	66.4	382.9	5 327.4	2 067.9	7 395.3	7.2	72.0
September	4 387.7	622.0	5 009.7	331.3	72.5	403.8	5 413.6	1 991.1	7 404.6	7.5	73.1
October	4 376.4	623.0	4 999.4	307.2	61.4	368.6	5 368.1	2 048.0	7 416.0	6.9	72.4
November	4 378.8	608.7	4 987.5	301.3	48.9	350.3	5 337.8	2 089.6	7 427.4	6.6	71.9
December	4 462.2	617.4	5 079.6	322.0	65.7	387.7	5 467.3	1 971.5	7 438.7	7.1	73.5
<b>2000</b>											
January	4 367.2	611.0	4 978.2	344.6	62.5	407.1	5 385.3	2 062.7	7 448.0	7.6	72.3
February	4 420.6	613.8	5 034.3	326.5	66.1	392.6	5 427.0	2 030.2	7 457.2	7.2	72.8
March	4 391.2	642.6	5 033.8	310.9	71.3	382.2	5 415.9	2 050.4	7 466.4	7.1	72.5
FEMALES											
<b>1999</b>											
January	2 139.8	1 530.6	3 670.4	210.1	97.1	307.2	3 977.6	3 582.5	7 560.1	7.7	52.6
February	2 126.0	1 606.4	3 732.4	213.0	123.8	336.8	4 069.2	3 499.8	7 569.1	8.3	53.8
March	2 103.2	1 647.7	3 750.9	198.8	132.2	331.1	4 082.0	3 496.1	7 578.1	8.1	53.9
April	2 110.0	1 663.7	3 773.7	190.2	112.7	302.9	4 076.7	3 510.5	7 587.2	7.4	53.7
May	2 108.5	1 675.4	3 783.8	181.0	110.2	291.1	4 074.9	3 521.3	7 596.3	7.1	53.6
June	2 132.5	1 683.5	3 816.0	175.8	100.9	276.7	4 092.7	3 512.7	7 605.4	6.8	53.8
July	2 172.6	1 659.4	3 832.0	160.4	104.2	264.6	4 096.6	3 517.9	7 614.5	6.5	53.8
August	2 109.6	1 677.5	3 787.1	166.8	103.1	269.9	4 057.0	3 566.6	7 623.6	6.7	53.2
September	2 165.0	1 733.2	3 898.2	187.7	121.8	309.5	4 207.7	3 425.1	7 632.7	7.4	55.1
October	2 190.8	1 698.9	3 889.7	173.9	100.4	274.4	4 164.1	3 479.1	7 643.2	6.6	54.5
November	2 178.0	1 727.3	3 905.3	167.5	92.1	259.6	4 164.9	3 488.7	7 653.7	6.2	54.4
December	2 263.8	1 703.4	3 967.2	184.7	94.8	279.5	4 246.7	3 417.4	7 664.1	6.6	55.4
<b>2000</b>											
January	2 208.0	1 587.8	3 795.8	188.5	100.7	289.2	4 085.0	3 587.3	7 672.3	7.1	53.2
February	2 189.2	1 681.6	3 870.7	200.8	125.2	326.1	4 196.8	3 483.7	7 680.5	7.8	54.6
March	2 201.2	1 715.0	3 916.2	197.4	120.6	318.0	4 234.2	3 454.5	7 688.7	7.5	55.1
PERSONS											
<b>1999</b>											
January	6 422.1	2 131.0	8 553.0	599.7	154.8	754.5	9 307.5	5 581.2	14 888.8	8.1	62.5
February	6 444.0	2 204.7	8 648.7	594.0	186.9	780.9	9 429.6	5 477.5	14 907.1	8.3	63.3
March	6 415.4	2 282.0	8 697.3	534.6	201.8	736.4	9 433.8	5 491.7	14 925.5	7.8	63.2
April	6 409.2	2 304.4	8 713.6	527.5	177.7	705.2	9 418.8	5 525.5	14 944.3	7.5	63.0
May	6 399.3	2 317.2	8 716.5	513.2	175.5	688.8	9 405.3	5 557.9	14 963.2	7.3	62.9
June	6 449.3	2 344.3	8 793.6	497.8	150.7	648.5	9 442.1	5 540.1	14 982.1	6.9	63.0
July	6 546.3	2 278.1	8 824.4	462.6	161.4	624.0	9 448.4	5 552.1	15 000.5	6.6	63.0
August	6 433.4	2 298.2	8 731.6	483.2	169.6	652.8	9 384.4	5 634.5	15 018.9	7.0	62.5
September	6 552.7	2 355.2	8 908.0	519.0	194.3	713.3	9 621.2	5 416.1	15 037.4	7.4	64.0
October	6 567.2	2 321.9	8 889.2	481.1	161.9	643.0	9 532.2	5 527.0	15 059.2	6.7	63.3
November	6 556.8	2 336.0	8 892.8	468.8	141.1	609.9	9 502.7	5 578.3	15 081.0	6.4	63.0
December	6 726.0	2 320.8	9 046.8	506.7	160.5	667.2	9 714.0	5 388.9	15 102.9	6.9	64.3
<b>2000</b>											
January	6 575.2	2 198.8	8 773.9	533.2	163.2	696.3	9 470.3	5 650.0	15 120.3	7.4	62.6
February	6 609.8	2 295.3	8 905.1	527.3	191.4	718.7	9 623.8	5 513.9	15 137.7	7.5	63.6
March	6 592.4	2 357.6	8 950.0	508.3	191.8	700.2	9 650.1	5 504.9	15 155.1	7.3	63.7

LABOUR FORCE STATUS (AGED 15 AND OVER): **Seasonally adjusted**

Month	EMPLOYED.....			UNEMPLOYED.....			Labour force '000	Unemp- loyment rate %	Partic- ipation rate %
	Full time '000	Part time '000	Total '000	Looking for f/t work	Looking for p/t work	Total '000			
				'000	'000				
<b>MALES</b>									
<b>1999</b>									
January	4 282.3	625.3	4 907.5	358.6	55.0	413.6	5 321.1	7.8	72.6
February	4 309.5	628.0	4 937.4	349.9	57.5	407.4	5 344.8	7.6	72.8
March	4 330.7	627.2	4 957.8	328.6	60.7	389.3	5 347.1	7.3	72.8
April	4 314.9	631.4	4 946.4	344.1	62.6	406.8	5 353.1	7.6	72.8
May	4 313.1	630.6	4 943.7	337.7	66.7	404.4	5 348.0	7.6	72.6
June	4 334.0	636.5	4 970.5	332.5	56.7	389.2	5 359.6	7.3	72.7
July	4 348.9	628.4	4 977.3	310.8	64.4	375.2	5 352.6	7.0	72.5
August	4 373.8	619.0	4 992.7	320.6	69.8	390.5	5 383.2	7.3	72.8
September	4 373.1	613.3	4 986.4	325.9	66.3	392.2	5 378.6	7.3	72.6
October	4 369.4	620.2	4 989.7	326.7	64.2	390.9	5 380.6	7.3	72.6
November	4 381.0	610.4	4 991.4	310.2	55.9	366.0	5 357.4	6.8	72.1
December	4 390.2	616.5	5 006.7	326.4	62.6	388.9	5 395.6	7.2	72.5
<b>2000</b>									
January	4 367.1	636.0	5 003.0	317.2	60.2	377.4	5 380.5	7.0	72.2
February	4 412.2	644.4	5 056.6	299.8	60.3	360.1	5 416.7	6.6	72.6
March	4 410.2	635.6	5 045.8	304.1	62.2	366.3	5 412.1	6.8	72.5
<b>FEMALES</b>									
<b>1999</b>									
January	2 136.4	1 634.3	3 770.7	195.2	98.7	293.9	4 064.6	7.2	53.8
February	2 130.4	1 637.2	3 767.6	185.7	106.9	292.6	4 060.1	7.2	53.6
March	2 122.1	1 635.9	3 757.9	189.5	117.5	307.0	4 065.0	7.6	53.6
April	2 124.3	1 645.6	3 769.9	189.2	107.8	296.9	4 066.9	7.3	53.6
May	2 128.1	1 648.0	3 776.1	183.6	110.9	294.4	4 070.6	7.2	53.6
June	2 156.9	1 650.8	3 807.7	184.2	109.5	293.7	4 101.4	7.2	53.9
July	2 140.9	1 671.1	3 812.0	171.5	112.6	284.1	4 096.1	6.9	53.8
August	2 144.9	1 683.1	3 828.1	176.7	110.3	287.0	4 115.0	7.0	54.0
September	2 150.8	1 691.7	3 842.6	188.7	112.9	301.6	4 144.1	7.3	54.3
October	2 183.5	1 698.7	3 882.2	182.2	102.6	284.8	4 167.0	6.8	54.5
November	2 178.2	1 703.2	3 881.4	178.4	101.5	279.9	4 161.2	6.7	54.4
December	2 201.6	1 704.0	3 905.7	182.8	100.7	283.4	4 189.1	6.8	54.7
<b>2000</b>									
January	2 204.0	1 696.4	3 900.3	175.3	102.1	277.4	4 177.7	6.6	54.5
February	2 192.8	1 713.0	3 905.8	175.2	108.2	283.4	4 189.3	6.8	54.5
March	2 221.9	1 703.1	3 925.0	188.2	107.3	295.5	4 220.5	7.0	54.9
<b>PERSONS</b>									
<b>1999</b>									
January	6 418.7	2 259.6	8 678.3	553.8	153.7	707.5	9 385.7	7.5	63.0
February	6 439.8	2 265.2	8 705.0	535.6	164.4	700.0	9 405.0	7.4	63.1
March	6 452.7	2 263.0	8 715.8	518.2	178.2	696.3	9 412.1	7.4	63.1
April	6 439.3	2 277.0	8 716.3	533.3	170.4	703.7	9 420.0	7.5	63.0
May	6 441.2	2 278.6	8 719.8	521.3	177.6	698.8	9 418.6	7.4	62.9
June	6 490.9	2 287.3	8 778.2	516.7	166.2	682.9	9 461.1	7.2	63.1
July	6 489.8	2 299.6	8 789.4	482.4	177.0	659.3	9 448.7	7.0	63.0
August	6 518.7	2 302.1	8 820.8	497.4	180.1	677.4	9 498.2	7.1	63.2
September	6 524.0	2 305.0	8 829.0	514.5	179.2	693.7	9 522.7	7.3	63.3
October	6 552.9	2 318.9	8 871.8	508.9	166.8	675.8	9 547.6	7.1	63.4
November	6 559.1	2 313.6	8 872.8	488.5	157.4	645.9	9 518.7	6.8	63.1
December	6 591.8	2 320.5	8 912.3	509.1	163.2	672.3	9 584.7	7.0	63.5
<b>2000</b>									
January	6 571.0	2 332.3	8 903.4	492.5	162.3	654.8	9 558.1	6.9	63.2
February	6 605.0	2 357.4	8 962.4	475.0	168.5	643.5	9 606.0	6.7	63.5
March	6 632.0	2 338.7	8 970.7	492.3	169.5	661.8	9 632.6	6.9	63.6

## LABOUR FORCE STATUS (AGED 15 AND OVER): Trend(a)

Month	EMPLOYED.....			UNEMPLOYED.....			Labour force '000	Unemp- loyment rate %	Partic- ipation rate %
	Full time '000	Part time '000	Total '000	Looking for f/t work '000	Looking for p/t work '000	Total '000			
MALES									
<b>1999</b>									
January	4 294.0	624.5	4 918.4	353.8	57.2	411.0	5 329.4	7.7	72.7
February	4 300.6	627.9	4 928.5	348.5	58.3	406.9	5 335.3	7.6	72.7
March	4 309.0	630.3	4 939.3	342.9	59.7	402.6	5 341.9	7.5	72.7
April	4 318.6	631.7	4 950.3	337.1	61.1	398.3	5 348.6	7.4	72.7
May	4 328.4	631.5	4 959.9	331.9	62.8	394.7	5 354.7	7.4	72.7
June	4 338.3	629.7	4 968.1	327.7	64.2	391.9	5 360.0	7.3	72.7
July	4 349.3	626.1	4 975.5	324.4	64.9	389.3	5 364.8	7.3	72.6
August	4 360.2	621.4	4 981.6	322.4	65.0	387.4	5 369.0	7.2	72.6
September	4 369.3	617.5	4 986.7	321.4	64.4	385.8	5 372.5	7.2	72.5
October	4 375.5	616.4	4 991.8	320.8	63.3	384.1	5 375.9	7.1	72.5
November	4 379.7	618.7	4 998.5	319.7	62.0	381.7	5 380.2	7.1	72.4
December	4 384.5	623.6	5 008.1	317.0	60.9	377.9	5 385.9	7.0	72.4
<b>2000</b>									
January	4 390.5	629.1	5 019.7	313.1	60.4	373.5	5 393.2	6.9	72.4
February	4 396.9	634.5	5 031.4	309.0	60.2	369.3	5 400.6	6.8	72.4
March	4 403.4	639.1	5 042.5	305.2	60.5	365.7	5 408.3	6.8	72.5
FEMALES									
<b>1999</b>									
January	2 126.0	1 635.6	3 761.6	192.4	107.2	299.7	4 061.2	7.4	53.7
February	2 127.2	1 636.0	3 763.2	190.7	107.8	298.5	4 061.7	7.3	53.7
March	2 129.0	1 638.1	3 767.1	188.5	108.7	297.2	4 064.3	7.3	53.6
April	2 130.8	1 642.6	3 773.4	185.8	110.1	295.9	4 069.3	7.3	53.6
May	2 133.4	1 649.5	3 783.0	183.2	111.4	294.6	4 077.6	7.2	53.7
June	2 137.7	1 658.5	3 796.2	181.3	111.9	293.2	4 089.4	7.2	53.8
July	2 143.9	1 669.4	3 813.3	180.3	111.2	291.5	4 104.8	7.1	53.9
August	2 152.2	1 680.2	3 832.4	180.2	109.7	289.9	4 122.3	7.0	54.1
September	2 161.6	1 689.7	3 851.3	180.4	107.7	288.0	4 139.3	7.0	54.2
October	2 171.8	1 696.6	3 868.4	180.6	105.6	286.2	4 154.5	6.9	54.4
November	2 182.3	1 700.7	3 883.0	180.5	103.9	284.4	4 167.4	6.8	54.5
December	2 192.4	1 702.9	3 895.2	180.1	103.2	283.3	4 178.6	6.8	54.5
<b>2000</b>									
January	2 200.8	1 704.5	3 905.3	179.8	103.5	283.3	4 188.6	6.8	54.6
February	2 207.8	1 705.7	3 913.5	179.9	104.3	284.1	4 197.6	6.8	54.7
March	2 213.1	1 706.4	3 919.4	180.0	105.2	285.2	4 204.7	6.8	54.7
PERSONS									
<b>1999</b>									
January	6 420.0	2 260.0	8 680.0	546.2	164.4	710.6	9 390.6	7.6	63.1
February	6 427.8	2 263.9	8 691.7	539.2	166.2	705.4	9 397.0	7.5	63.0
March	6 438.0	2 268.5	8 706.4	531.4	168.4	699.8	9 406.3	7.4	63.0
April	6 449.4	2 274.3	8 723.7	522.9	171.2	694.1	9 417.8	7.4	63.0
May	6 461.8	2 281.1	8 742.9	515.2	174.1	689.3	9 432.2	7.3	63.0
June	6 476.0	2 288.2	8 764.2	509.1	176.0	685.1	9 449.3	7.3	63.1
July	6 493.3	2 295.5	8 788.8	504.7	176.1	680.8	9 469.6	7.2	63.1
August	6 512.4	2 301.6	8 814.0	502.6	174.6	677.3	9 491.2	7.1	63.2
September	6 530.9	2 307.2	8 838.0	501.8	172.0	673.8	9 511.9	7.1	63.2
October	6 547.3	2 312.9	8 860.2	501.4	168.8	670.3	9 530.5	7.0	63.3
November	6 562.0	2 319.4	8 881.4	500.2	165.9	666.1	9 547.5	7.0	63.3
December	6 576.9	2 326.4	8 903.3	497.1	164.1	661.2	9 564.5	6.9	63.3
<b>2000</b>									
January	6 591.4	2 333.6	8 925.0	492.9	163.8	656.8	9 581.7	6.9	63.4
February	6 604.7	2 340.2	8 944.9	488.9	164.5	653.4	9 598.3	6.8	63.4
March	6 616.4	2 345.5	8 962.0	485.2	165.8	651.0	9 613.0	6.8	63.5

(a) Trend estimates for September 1999 to February 2000 have been revised.



## UNEMPLOYED PERSONS: Original

Month	NUMBER OF UNEMPLOYED PERSONS.....					UNEMPLOYMENT RATE.....					UNEMPLOYMENT TO POPULATION RATIO	
	Aged 15-19 looking for f/t work	Aged 20 and over looking for f/t work	Total looking for f/t work	Looking for p/t work	Total	Aged 15-19 looking for f/t work	Aged 20 and over looking for f/t work	Total looking for f/t work	Looking for p/t work	Total	Aged 15-19 looking for f/t work	Aged 20 and over looking for f/t work
	'000	'000	'000	'000	'000	%	%	%	%	%	%	%
MALES												
<b>1999</b>												
January	52.7	336.8	389.5	57.8	447.3	25.2	7.5	8.3	8.8	8.4	7.8	5.1
February	44.4	336.6	381.0	63.1	444.0	21.9	7.5	8.1	9.5	8.3	6.5	5.1
March	42.5	293.2	335.8	69.6	405.4	22.9	6.6	7.2	9.9	7.6	6.3	4.4
April	40.8	296.5	337.3	64.9	402.2	21.8	6.7	7.3	9.2	7.5	6.0	4.4
May	38.1	294.2	332.3	65.4	397.7	21.3	6.6	7.2	9.2	7.5	5.6	4.4
June	39.1	282.9	321.9	49.8	371.7	22.1	6.3	6.9	7.0	6.9	5.7	4.2
July	32.8	269.4	302.2	57.2	359.4	17.3	6.0	6.5	8.5	6.7	4.8	4.0
August	32.2	284.2	316.4	66.4	382.9	18.3	6.4	6.8	9.7	7.2	4.7	4.2
September	35.1	296.2	331.3	72.5	403.8	18.7	6.5	7.0	10.4	7.5	5.1	4.4
October	33.8	273.4	307.2	61.4	368.6	18.5	6.1	6.6	9.0	6.9	4.9	4.1
November	38.6	262.7	301.3	48.9	350.3	21.1	5.8	6.4	7.4	6.6	5.6	3.9
December	50.1	271.9	322.0	65.7	387.7	23.2	6.0	6.7	9.6	7.1	7.3	4.0
<b>2000</b>												
January	51.0	293.6	344.6	62.5	407.1	23.4	6.5	7.3	9.3	7.6	7.4	4.3
February	45.8	280.7	326.5	66.1	392.6	22.4	6.2	6.9	9.7	7.2	6.7	4.1
March	38.9	271.9	310.9	71.3	382.2	21.3	6.0	6.6	10.0	7.1	5.7	4.0
FEMALES												
<b>1999</b>												
January	36.3	173.9	210.1	97.1	307.2	27.7	7.8	8.9	6.0	7.7	5.6	2.5
February	35.1	177.8	213.0	123.8	336.8	30.2	8.0	9.1	7.2	8.3	5.4	2.6
March	29.6	169.2	198.8	132.2	331.1	27.7	7.7	8.6	7.4	8.1	4.6	2.4
April	30.4	159.8	190.2	112.7	302.9	26.7	7.3	8.3	6.3	7.4	4.7	2.3
May	31.3	149.6	181.0	110.2	291.1	28.6	6.9	7.9	6.2	7.1	4.8	2.2
June	26.2	149.6	175.8	100.9	276.7	24.6	6.8	7.6	5.7	6.8	4.0	2.2
July	25.6	134.8	160.4	104.2	264.6	22.3	6.1	6.9	5.9	6.5	3.9	1.9
August	26.4	140.4	166.8	103.1	269.9	25.4	6.5	7.3	5.8	6.7	4.1	2.0
September	28.7	159.0	187.7	121.8	309.5	26.1	7.1	8.0	6.6	7.4	4.4	2.3
October	26.7	147.2	173.9	100.4	274.4	24.1	6.5	7.4	5.6	6.6	4.1	2.1
November	29.2	138.3	167.5	92.1	259.6	25.7	6.2	7.1	5.1	6.2	4.5	2.0
December	37.8	146.9	184.7	94.8	279.5	27.7	6.4	7.5	5.3	6.6	5.8	2.1
<b>2000</b>												
January	32.7	155.8	188.5	100.7	289.2	24.3	6.9	7.9	6.0	7.1	5.0	2.2
February	31.8	169.1	200.8	125.2	326.1	25.1	7.5	8.4	6.9	7.8	4.8	2.4
March	27.8	169.6	197.4	120.6	318.0	24.7	7.4	8.2	6.6	7.5	4.2	2.4
PERSONS												
<b>1999</b>												
January	89.0	510.6	599.7	154.8	754.5	26.2	7.6	8.5	6.8	8.1	6.7	3.8
February	79.6	514.4	594.0	186.9	780.9	24.9	7.7	8.4	7.8	8.3	6.0	3.8
March	72.2	462.4	534.6	201.8	736.4	24.7	6.9	7.7	8.1	7.8	5.4	3.4
April	71.2	456.3	527.5	177.7	705.2	23.6	6.9	7.6	7.2	7.5	5.4	3.4
May	69.5	443.8	513.2	175.5	688.8	24.0	6.7	7.4	7.0	7.3	5.2	3.3
June	65.3	432.5	497.8	150.7	648.5	23.0	6.5	7.2	6.0	6.9	4.9	3.2
July	58.4	404.2	462.6	161.4	624.0	19.2	6.0	6.6	6.6	6.6	4.4	3.0
August	58.7	424.6	483.2	169.6	652.8	20.9	6.4	7.0	6.9	7.0	4.4	3.1
September	63.8	455.2	519.0	194.3	713.3	21.4	6.7	7.3	7.6	7.4	4.8	3.3
October	60.5	420.6	481.1	161.9	643.0	20.6	6.2	6.8	6.5	6.7	4.5	3.1
November	67.8	401.0	468.8	141.1	609.9	22.9	6.0	6.7	5.7	6.4	5.1	2.9
December	87.9	418.8	506.7	160.5	667.2	25.0	6.1	7.0	6.5	6.9	6.6	3.0
<b>2000</b>												
January	83.8	449.4	533.2	163.2	696.3	23.7	6.7	7.5	6.9	7.4	6.2	3.3
February	77.6	449.7	527.3	191.4	718.7	23.4	6.6	7.4	7.7	7.5	5.8	3.3
March	66.8	441.5	508.3	191.8	700.2	22.6	6.5	7.2	7.5	7.3	5.0	3.2

## UNEMPLOYED PERSONS: Seasonally adjusted

Month	NUMBER OF UNEMPLOYED PERSONS....					UNEMPLOYMENT RATE.....					UNEMPLOYMENT TO POPULATION RATIO	
	Aged 15-19 looking for f/t work	Aged 20 and over looking for f/t work	Total looking for f/t work	Looking for p/t work	Total	Aged 15-19 looking for f/t work	Aged 20 and over looking for f/t work	Total looking for f/t work	Looking for p/t work	Total	Aged 15-19 looking for f/t work	Aged 20 and over looking for f/t work
	'000	'000	'000	'000	'000	%	%	%	%	%	%	%
MALES												
<b>1999</b>												
January	43.3	315.3	358.6	55.0	413.6	23.3	7.1	7.7	8.1	7.8	6.4	4.7
February	40.8	309.1	349.9	57.5	407.4	21.3	6.9	7.5	8.4	7.6	6.0	4.6
March	41.8	286.8	328.6	60.7	389.3	22.6	6.4	7.1	8.8	7.3	6.2	4.3
April	41.5	302.6	344.1	62.6	406.8	22.1	6.8	7.4	9.0	7.6	6.1	4.5
May	38.6	299.1	337.7	66.7	404.4	20.7	6.7	7.3	9.6	7.6	5.7	4.5
June	39.9	292.6	332.5	56.7	389.2	21.2	6.5	7.1	8.2	7.3	5.9	4.4
July	36.0	274.9	310.8	64.4	375.2	19.0	6.1	6.7	9.3	7.0	5.3	4.1
August	36.1	284.5	320.6	69.8	390.5	19.0	6.3	6.8	10.1	7.3	5.3	4.2
September	38.1	287.8	325.9	66.3	392.2	19.6	6.4	6.9	9.8	7.3	5.6	4.3
October	38.2	288.5	326.7	64.2	390.9	20.1	6.4	7.0	9.4	7.3	5.6	4.3
November	41.8	268.4	310.2	55.9	366.0	21.5	6.0	6.6	8.4	6.8	6.1	4.0
December	42.0	284.4	326.4	62.6	388.9	21.7	6.3	6.9	9.2	7.2	6.1	4.2
<b>2000</b>												
January	42.0	275.2	317.2	60.2	377.4	21.6	6.1	6.8	8.6	7.0	6.1	4.1
February	42.2	257.6	299.8	60.3	360.1	21.8	5.7	6.4	8.6	6.6	6.1	3.8
March	38.2	265.9	304.1	62.2	366.3	21.0	5.9	6.5	8.9	6.8	5.6	3.9
FEMALES												
<b>1999</b>												
January	29.3	165.8	195.2	98.7	293.9	26.6	7.5	8.4	5.7	7.2	4.5	2.4
February	30.2	155.5	185.7	106.9	292.6	28.1	7.0	8.0	6.1	7.2	4.7	2.2
March	28.8	160.7	189.5	117.5	307.0	26.3	7.3	8.2	6.7	7.6	4.5	2.3
April	30.9	158.2	189.2	107.8	296.9	26.6	7.2	8.2	6.1	7.3	4.8	2.3
May	31.5	152.1	183.6	110.9	294.4	27.3	6.9	7.9	6.3	7.2	4.9	2.2
June	30.1	154.1	184.2	109.5	293.7	25.9	6.9	7.9	6.2	7.2	4.6	2.2
July	30.4	141.2	171.5	112.6	284.1	26.2	6.4	7.4	6.3	6.9	4.7	2.0
August	30.1	146.6	176.7	110.3	287.0	26.2	6.6	7.6	6.1	7.0	4.6	2.1
September	31.8	156.8	188.7	112.9	301.6	27.4	7.1	8.1	6.3	7.3	4.9	2.2
October	30.3	152.0	182.2	102.6	284.8	26.1	6.8	7.7	5.7	6.8	4.6	2.2
November	30.3	148.1	178.4	101.5	279.9	25.4	6.6	7.6	5.6	6.7	4.6	2.1
December	30.1	152.6	182.8	100.7	283.4	25.4	6.7	7.7	5.6	6.8	4.6	2.2
<b>2000</b>												
January	26.6	148.7	175.3	102.1	277.4	23.3	6.6	7.4	5.7	6.6	4.1	2.1
February	27.3	147.9	175.2	108.2	283.4	23.3	6.6	7.4	5.9	6.8	4.2	2.1
March	27.1	161.1	188.2	107.3	295.5	23.5	7.0	7.8	5.9	7.0	4.1	2.3
PERSONS												
<b>1999</b>												
January	72.6	481.2	553.8	153.7	707.5	24.5	7.2	7.9	6.4	7.5	5.5	3.5
February	70.9	464.6	535.6	164.4	700.0	23.7	7.0	7.7	6.8	7.4	5.4	3.4
March	70.7	447.5	518.2	178.2	696.3	24.0	6.7	7.4	7.3	7.4	5.3	3.3
April	72.4	460.9	533.3	170.4	703.7	23.8	6.9	7.6	7.0	7.5	5.5	3.4
May	70.1	451.2	521.3	177.6	698.8	23.3	6.8	7.5	7.2	7.4	5.3	3.3
June	70.0	446.7	516.7	166.2	682.9	23.0	6.7	7.4	6.8	7.2	5.3	3.3
July	66.3	416.0	482.4	177.0	659.3	21.7	6.2	6.9	7.1	7.0	5.0	3.0
August	66.3	431.1	497.4	180.1	677.4	21.7	6.4	7.1	7.3	7.1	5.0	3.1
September	69.9	444.7	514.5	179.2	693.7	22.5	6.6	7.3	7.2	7.3	5.2	3.2
October	68.5	440.4	508.9	166.8	675.8	22.4	6.5	7.2	6.7	7.1	5.1	3.2
November	72.1	416.5	488.5	157.4	645.9	23.0	6.2	6.9	6.4	6.8	5.4	3.0
December	72.1	437.0	509.1	163.2	672.3	23.1	6.4	7.2	6.6	7.0	5.4	3.2
<b>2000</b>												
January	68.5	424.0	492.5	162.3	654.8	22.2	6.3	7.0	6.5	6.9	5.1	3.1
February	69.5	405.5	475.0	168.5	643.5	22.4	6.0	6.7	6.7	6.7	5.2	2.9
March	65.3	427.0	492.3	169.5	661.8	22.0	6.3	6.9	6.8	6.9	4.9	3.1

## UNEMPLOYED PERSONS: Trend(a)

Month	NUMBER OF UNEMPLOYED PERSONS.....					UNEMPLOYMENT RATE.....					UNEMPLOYMENT TO POPULATION RATIO	
	Aged 15-19 looking for f/t work	Aged 20 and over looking for f/t work	Total looking for f/t work	Looking for p/t work	Total	Aged 15-19 looking for f/t work	Aged 20 and over looking for f/t work	Total looking for f/t work	Looking for p/t work	Total	Aged 15-19 looking for f/t work	Aged 20 and over looking for f/t work
	'000	'000	'000	'000	'000	%	%	%	%	%	%	%
MALES												
<b>1999</b>												
January	43.1	310.7	353.8	57.2	411.0	22.8	7.0	7.6	8.4	7.7	6.4	4.7
February	42.1	306.5	348.5	58.3	406.9	22.4	6.9	7.5	8.5	7.6	6.2	4.6
March	41.2	301.7	342.9	59.7	402.6	22.0	6.8	7.4	8.7	7.5	6.1	4.5
April	40.3	296.8	337.1	61.1	398.3	21.5	6.6	7.2	8.8	7.4	5.9	4.4
May	39.2	292.7	331.9	62.8	394.7	20.9	6.5	7.1	9.0	7.4	5.8	4.4
June	38.2	289.5	327.7	64.2	391.9	20.3	6.5	7.0	9.2	7.3	5.6	4.3
July	37.5	286.9	324.4	64.9	389.3	19.8	6.4	6.9	9.4	7.3	5.5	4.3
August	37.4	285.1	322.4	65.0	387.4	19.6	6.3	6.9	9.5	7.2	5.5	4.2
September	38.0	283.4	321.4	64.4	385.8	19.8	6.3	6.9	9.4	7.2	5.6	4.2
October	39.2	281.6	320.8	63.3	384.1	20.3	6.3	6.8	9.3	7.1	5.7	4.2
November	40.3	279.4	319.7	62.0	381.7	20.9	6.2	6.8	9.1	7.1	5.9	4.1
December	41.1	275.8	317.0	60.9	377.9	21.3	6.1	6.7	8.9	7.0	6.0	4.1
<b>2000</b>												
January	41.4	271.7	313.1	60.4	373.5	21.6	6.0	6.7	8.8	6.9	6.0	4.0
February	41.4	267.7	309.0	60.2	369.3	21.7	5.9	6.6	8.7	6.8	6.0	4.0
March	41.0	264.2	305.2	60.5	365.7	21.7	5.8	6.5	8.7	6.8	6.0	3.9
FEMALES												
<b>1999</b>												
January	29.9	162.5	192.4	107.2	299.7	27.4	7.4	8.3	6.2	7.4	4.6	2.4
February	29.8	160.9	190.7	107.8	298.5	27.0	7.3	8.2	6.2	7.3	4.6	2.3
March	29.9	158.6	188.5	108.7	297.2	26.7	7.2	8.1	6.2	7.3	4.6	2.3
April	30.1	155.7	185.8	110.1	295.9	26.6	7.1	8.0	6.3	7.3	4.7	2.2
May	30.4	152.8	183.2	111.4	294.6	26.6	6.9	7.9	6.3	7.2	4.7	2.2
June	30.6	150.7	181.3	111.9	293.2	26.5	6.8	7.8	6.3	7.2	4.7	2.2
July	30.8	149.5	180.3	111.2	291.5	26.5	6.8	7.8	6.2	7.1	4.7	2.1
August	30.9	149.3	180.2	109.7	289.9	26.5	6.7	7.7	6.1	7.0	4.7	2.1
September	30.8	149.6	180.4	107.7	288.0	26.4	6.7	7.7	6.0	7.0	4.7	2.1
October	30.4	150.2	180.6	105.6	286.2	26.1	6.7	7.7	5.9	6.9	4.7	2.1
November	29.9	150.7	180.5	103.9	284.4	25.5	6.7	7.6	5.8	6.8	4.6	2.2
December	29.1	151.0	180.1	103.2	283.3	24.9	6.7	7.6	5.7	6.8	4.4	2.2
<b>2000</b>												
January	28.2	151.6	179.8	103.5	283.3	24.2	6.7	7.6	5.7	6.8	4.3	2.2
February	27.5	152.4	179.9	104.3	284.1	23.6	6.7	7.5	5.8	6.8	4.2	2.2
March	26.8	153.2	180.0	105.2	285.2	23.1	6.7	7.5	5.8	6.8	4.1	2.2
PERSONS												
<b>1999</b>												
January	73.0	473.2	546.2	164.4	710.6	24.5	7.1	7.8	6.8	7.6	5.5	3.5
February	71.8	467.3	539.2	166.2	705.4	24.1	7.0	7.7	6.8	7.5	5.4	3.4
March	71.1	460.3	531.4	168.4	699.8	23.8	6.9	7.6	6.9	7.4	5.4	3.4
April	70.4	452.5	522.9	171.2	694.1	23.5	6.8	7.5	7.0	7.4	5.3	3.3
May	69.7	445.5	515.2	174.1	689.3	23.1	6.7	7.4	7.1	7.3	5.2	3.3
June	68.8	440.2	509.1	176.0	685.1	22.7	6.6	7.3	7.1	7.3	5.2	3.2
July	68.3	436.4	504.7	176.1	680.8	22.4	6.5	7.2	7.1	7.2	5.1	3.2
August	68.2	434.4	502.6	174.6	677.3	22.3	6.5	7.2	7.1	7.1	5.1	3.2
September	68.8	433.0	501.8	172.0	673.8	22.3	6.4	7.1	6.9	7.1	5.2	3.2
October	69.6	431.8	501.4	168.8	670.3	22.5	6.4	7.1	6.8	7.0	5.2	3.1
November	70.2	430.0	500.2	165.9	666.1	22.6	6.4	7.1	6.7	7.0	5.2	3.1
December	70.2	426.9	497.1	164.1	661.2	22.7	6.3	7.0	6.6	6.9	5.2	3.1
<b>2000</b>												
January	69.7	423.3	492.9	163.8	656.8	22.6	6.2	7.0	6.6	6.9	5.2	3.1
February	68.9	420.0	488.9	164.5	653.4	22.4	6.2	6.9	6.6	6.8	5.1	3.0
March	67.9	417.4	485.2	165.8	651.0	22.2	6.1	6.8	6.6	6.8	5.0	3.0

(a) Trend estimates for September 1999 to February 2000 have been revised.

PERSONS AGED 15 TO 19, Education and Labour Force: **Original**—March 2000

	EMPLOYED.....			UNEMPLOYED.....			Labour force	Not in labour force	Civilian population aged 15-19	Unemployment rate	Participation rate
	Full time	Part time	Total	Looking for f/t work	Looking for p/t work	Total					
	'000	'000	'000	'000	'000	'000	'000	'000	'000	%	%
ATTENDING NEITHER SCHOOL NOR A TERTIARY EDUCATIONAL INSTITUTION FULL TIME											
Males	141.1	40.4	181.5	33.3	* 2.0	35.3	216.9	22.6	239.5	16.3	90.6
Females	82.4	46.5	128.9	25.3	* 2.1	27.4	156.3	26.8	183.1	17.5	85.4
Persons	223.6	86.9	310.5	58.6	* 4.1	62.7	373.2	49.4	422.6	16.8	88.3
ATTENDING A TERTIARY EDUCATIONAL INSTITUTION FULL TIME											
Males	* 1.9	48.5	50.5	* 3.1	10.5	13.6	64.1	55.9	120.0	21.3	53.4
Females	* 2.2	79.0	81.2	* 1.3	19.0	20.4	101.6	50.1	151.7	20.0	67.0
Persons	* 4.1	127.6	131.7	4.4	29.6	34.0	165.7	106.0	271.7	20.5	61.0
ATTENDING SCHOOL											
Males	* 0.9	89.5	90.4	* 2.5	25.8	28.4	118.8	209.8	328.6	23.9	36.2
Females	* 0.2	116.9	117.2	* 1.2	23.9	25.1	142.3	179.6	321.9	17.7	44.2
Persons	* 1.1	206.4	207.6	* 3.7	49.8	53.5	261.1	389.4	650.5	20.5	40.1
TOTAL											
Males	144.0	178.4	322.4	38.9	38.4	77.3	399.8	288.3	688.1	19.3	58.1
Females	84.9	242.5	327.3	27.8	45.1	72.9	400.2	256.4	656.7	18.2	60.9
<b>Persons</b>	<b>228.9</b>	<b>420.9</b>	<b>649.7</b>	<b>66.8</b>	<b>83.5</b>	<b>150.2</b>	<b>800.0</b>	<b>544.7</b>	<b>1 344.7</b>	<b>18.8</b>	<b>59.5</b>

LABOUR FORCE STATUS (AGED 15 & OVER), States & Territories: **Original**—March 2000

	EMPLOYED.....			UNEMPLOYED.....			Labour force	Not in labour force	Civilian population aged 15 and over	Unemp-loyment rate	Partic-ipation rate
	Full time	Part time	Total	Looking for f/t work	Looking for p/t work	Total					
	'000	'000	'000	'000	'000	'000					
MALES											
New South Wales	1 494.2	207.6	1 701.8	93.5	20.6	114.1	1 815.9	708.2	2 524.0	6.3	71.9
Victoria	1 084.4	165.4	1 249.8	71.7	21.1	92.8	1 342.5	517.5	1 860.0	6.9	72.2
Queensland	813.7	112.0	925.8	69.7	14.4	84.1	1 009.9	372.8	1 382.7	8.3	73.0
South Australia	327.6	55.8	383.4	28.4	4.6	33.0	416.3	172.1	588.4	7.9	70.8
Western Australia	456.5	67.3	523.7	32.4	6.8	39.3	563.0	177.7	740.7	7.0	76.0
Tasmania	94.2	15.4	109.7	9.5	1.8	11.3	120.9	59.3	180.3	9.3	67.1
Northern Territory	46.4	6.3	52.7	1.8	* 0.2	2.0	54.7	18.5	73.3	3.7	74.7
Australian Capital Territory	74.1	12.9	87.0	3.9	1.8	5.7	92.7	24.3	117.0	6.1	79.2
<b>Australia</b>	<b>4 391.2</b>	<b>642.6</b>	<b>5 033.8</b>	<b>310.9</b>	<b>71.3</b>	<b>382.2</b>	<b>5 415.9</b>	<b>2 050.4</b>	<b>7 466.4</b>	<b>7.1</b>	<b>72.5</b>
FEMALES											
New South Wales	771.1	536.7	1 307.8	57.0	35.4	92.4	1 400.2	1 205.4	2 605.6	6.6	53.7
Victoria	546.9	434.3	981.2	47.6	33.3	80.9	1 062.1	877.4	1 939.5	7.6	54.8
Queensland	395.7	328.3	724.0	47.6	25.1	72.7	796.7	611.4	1 408.1	9.1	56.6
South Australia	152.5	141.7	294.2	17.7	9.1	26.8	321.0	293.4	614.4	8.4	52.3
Western Australia	208.7	191.3	400.0	18.3	11.5	29.8	429.8	311.1	740.9	6.9	58.0
Tasmania	44.5	45.4	89.9	5.5	3.3	8.7	98.6	91.5	190.1	8.9	51.9
Northern Territory	29.1	13.0	42.1	1.4	* 0.6	2.0	44.1	22.7	66.7	4.5	66.0
Australian Capital Territory	52.6	24.4	77.0	2.3	2.3	4.6	81.6	41.6	123.2	5.7	66.2
<b>Australia</b>	<b>2 201.2</b>	<b>1 715.0</b>	<b>3 916.2</b>	<b>197.4</b>	<b>120.6</b>	<b>318.0</b>	<b>4 234.2</b>	<b>3 454.5</b>	<b>7 688.7</b>	<b>7.5</b>	<b>55.1</b>
PERSONS											
New South Wales	2 265.4	744.2	3 009.6	150.4	56.0	206.5	3 216.1	1 913.6	5 129.7	6.4	62.7
Victoria	1 631.3	599.6	2 230.9	119.3	54.4	173.7	2 404.6	1 394.9	3 799.6	7.2	63.3
Queensland	1 209.5	440.3	1 649.8	117.4	39.5	156.8	1 806.6	984.2	2 790.8	8.7	64.7
South Australia	480.1	197.5	677.6	46.1	13.6	59.8	737.3	465.4	1 202.8	8.1	61.3
Western Australia	665.1	258.6	923.7	50.8	18.3	69.1	992.8	488.8	1 481.6	7.0	67.0
Tasmania	138.8	60.8	199.6	14.9	5.1	20.0	219.6	150.8	370.4	9.1	59.3
Northern Territory	75.5	19.3	94.7	3.2	* 0.8	4.0	98.8	41.2	140.0	4.1	70.5
Australian Capital Territory	126.7	37.3	164.0	6.3	4.0	10.3	174.3	65.9	240.3	5.9	72.6
<b>Australia</b>	<b>6 592.4</b>	<b>2 357.6</b>	<b>8 950.0</b>	<b>508.3</b>	<b>191.8</b>	<b>700.2</b>	<b>9 650.1</b>	<b>5 504.9</b>	<b>15 155.1</b>	<b>7.3</b>	<b>63.7</b>

## UNEMPLOYED PERSONS—New South Wales, Victoria and Queensland: Original

Month	NUMBER OF UNEMPLOYED PERSONS.....					UNEMPLOYMENT RATE.....					UNEMPLOYMENT TO POPULATION RATIO	
	Aged 15-19 looking for f/t work	Aged 20 and over looking for f/t work	Total looking for f/t work	Looking for p/t work	Total	Aged 15-19 looking for f/t work	Aged 20 and over looking for f/t work	Total looking for f/t work	Looking for p/t work	Total	Aged 15-19 looking for f/t work	Aged 20 and over looking for f/t work
	'000	'000	'000	'000	'000	%	%	%	%	%	%	%
NEW SOUTH WALES												
<b>1999</b>												
January	27.4	159.7	187.1	43.7	230.9	24.2	7.1	7.9	6.2	7.5	6.3	3.5
February	23.0	157.9	180.9	56.7	237.5	21.5	7.0	7.6	7.6	7.6	5.2	3.4
March	21.8	145.4	167.2	67.6	234.8	22.5	6.5	7.1	8.6	7.5	5.0	3.2
April	20.5	137.5	158.1	55.9	214.0	21.1	6.1	6.8	7.2	6.9	4.7	3.0
May	19.0	131.2	150.2	50.0	200.1	20.1	5.8	6.4	6.5	6.4	4.3	2.8
June	15.8	128.1	143.9	45.7	189.6	18.1	5.7	6.1	5.9	6.1	3.6	2.8
July	14.6	121.8	136.4	41.4	177.8	14.4	5.3	5.7	5.5	5.7	3.3	2.6
August	16.8	134.0	150.8	51.2	202.0	19.5	5.9	6.4	6.7	6.5	3.8	2.9
September	18.9	140.0	158.9	63.5	222.4	19.8	6.0	6.6	8.0	6.9	4.3	3.0
October	15.3	123.3	138.6	44.0	182.6	15.9	5.3	5.8	5.9	5.8	3.5	2.6
November	18.6	113.4	131.9	35.0	167.0	20.7	4.9	5.5	4.7	5.3	4.2	2.4
December	29.4	120.5	149.9	47.1	197.0	26.0	5.1	6.1	6.3	6.1	6.6	2.6
<b>2000</b>												
January	24.9	135.2	160.1	40.5	200.6	21.4	5.8	6.6	5.8	6.4	5.6	2.9
February	22.9	129.9	152.8	59.2	212.0	20.8	5.6	6.3	7.6	6.6	5.2	2.8
March	18.6	131.8	150.4	56.0	206.5	19.5	5.7	6.2	7.0	6.4	4.2	2.8
VICTORIA												
<b>1999</b>												
January	19.8	121.3	141.2	41.0	182.2	27.8	7.3	8.1	7.1	7.9	6.2	3.6
February	16.5	132.6	149.1	48.3	197.4	24.3	7.8	8.4	8.2	8.4	5.1	3.9
March	14.7	115.3	130.0	49.3	179.3	23.6	6.9	7.5	8.0	7.6	4.6	3.4
April	17.0	120.2	137.3	47.8	185.1	28.7	7.2	8.0	7.6	7.9	5.3	3.5
May	13.8	118.6	132.3	49.9	182.2	24.9	7.1	7.7	7.9	7.8	4.3	3.5
June	13.5	118.4	131.9	36.6	168.4	24.4	7.1	7.6	5.7	7.1	4.2	3.4
July	11.9	107.5	119.4	50.1	169.4	20.4	6.4	6.8	7.9	7.1	3.7	3.1
August	11.3	107.4	118.7	47.1	165.8	20.4	6.5	6.9	7.5	7.1	3.5	3.1
September	12.8	115.5	128.3	51.6	179.9	21.7	6.8	7.3	7.8	7.5	4.0	3.4
October	13.8	100.0	113.7	41.8	155.5	23.3	6.0	6.6	6.5	6.6	4.3	2.9
November	14.6	98.6	113.2	42.1	155.3	24.5	6.0	6.6	6.5	6.6	4.5	2.9
December	18.0	100.3	118.3	47.0	165.3	23.8	5.9	6.6	7.3	6.8	5.5	2.9
<b>2000</b>												
January	20.8	100.6	121.4	47.3	168.7	26.7	6.0	7.0	7.9	7.2	6.4	2.9
February	16.8	105.0	121.8	53.0	174.8	24.9	6.2	6.9	8.5	7.3	5.2	3.0
March	15.4	103.9	119.3	54.4	173.7	26.4	6.1	6.8	8.3	7.2	4.7	3.0
QUEENSLAND												
<b>1999</b>												
January	18.4	101.2	119.6	33.2	152.8	26.0	8.1	9.0	7.6	8.7	7.2	4.1
February	20.4	98.9	119.2	39.3	158.6	29.7	8.0	9.1	8.5	8.9	7.9	4.0
March	17.3	90.6	107.9	37.1	145.0	27.5	7.3	8.3	7.9	8.2	6.7	3.7
April	16.9	90.9	107.7	34.3	142.0	24.8	7.3	8.2	7.2	7.9	6.6	3.7
May	17.8	92.8	110.5	35.5	146.1	27.7	7.5	8.5	7.3	8.2	6.9	3.7
June	16.9	88.9	105.9	35.8	141.6	25.8	7.1	8.0	7.5	7.9	6.6	3.6
July	15.8	84.3	100.0	33.0	133.0	24.0	6.7	7.6	7.1	7.5	6.1	3.4
August	12.5	85.2	97.7	35.5	133.3	19.6	6.9	7.6	7.4	7.5	4.8	3.4
September	13.7	94.1	107.8	39.7	147.5	20.6	7.5	8.2	8.3	8.2	5.3	3.8
October	15.7	96.4	112.2	35.8	147.9	24.8	7.7	8.5	7.5	8.2	6.1	3.8
November	15.6	88.4	104.0	30.0	134.0	23.2	7.0	7.9	6.2	7.4	6.0	3.5
December	19.1	99.7	118.8	30.6	149.4	25.1	7.8	8.8	6.4	8.2	7.3	4.0
<b>2000</b>												
January	16.7	101.0	117.7	36.9	154.6	22.4	8.0	8.8	8.1	8.6	6.4	4.0
February	15.5	106.4	121.8	33.4	155.2	22.7	8.4	9.2	6.9	8.6	5.9	4.2
March	15.1	102.2	117.4	39.5	156.8	23.0	8.1	8.8	8.2	8.7	5.8	4.0

UNEMPLOYED PERSONS—South Australia, Western Australia and Tasmania: **Original**

Month	NUMBER OF UNEMPLOYED PERSONS.....					UNEMPLOYMENT RATE.....					UNEMPLOYMENT TO POPULATION RATIO	
	Aged 15-19 looking for f/t work	Aged 20 and over looking for f/t work	Total looking for f/t work	Looking for p/t work	Total	Aged 15-19 looking for f/t work	Aged 20 and over looking for f/t work	Total looking for f/t work	Looking for p/t work	Total	Aged 15-19 looking for f/t work	Aged 20 and over looking for f/t work
	'000	'000	'000	'000	'000	%	%	%	%	%	%	%
SOUTH AUSTRALIA												
<b>1999</b>												
January	8.7	53.7	62.4	12.5	74.9	35.5	10.7	11.9	6.5	10.4	8.7	4.9
February	7.0	49.3	56.2	12.6	68.9	30.0	9.8	10.7	6.4	9.5	7.0	4.5
March	8.1	44.2	52.4	13.9	66.3	36.3	8.8	10.0	6.9	9.1	8.1	4.0
April	6.1	41.8	47.9	11.3	59.2	27.2	8.5	9.3	5.6	8.3	6.1	3.8
May	7.6	39.8	47.3	16.4	63.7	31.1	8.0	9.1	8.1	8.8	7.5	3.6
June	7.4	37.2	44.6	11.5	56.0	31.9	7.6	8.7	5.5	7.8	7.3	3.4
July	5.9	34.9	40.8	13.6	54.4	24.3	7.1	7.9	6.6	7.6	5.9	3.2
August	6.8	40.8	47.6	13.4	61.0	31.0	8.3	9.3	6.5	8.5	6.8	3.7
September	5.8	39.6	45.4	15.1	60.5	26.7	8.0	8.8	7.0	8.3	5.8	3.6
October	5.9	41.7	47.6	14.9	62.4	26.8	8.5	9.2	7.0	8.6	5.8	3.8
November	7.6	37.8	45.4	10.4	55.8	32.5	7.7	8.8	4.9	7.7	7.5	3.4
December	8.3	38.1	46.4	12.8	59.2	31.4	7.5	8.7	5.9	7.9	8.2	3.5
<b>2000</b>												
January	7.8	41.7	49.5	12.2	61.7	31.6	8.5	9.6	5.7	8.5	7.7	3.8
February	8.8	43.7	52.5	16.1	68.6	32.5	8.6	9.8	7.8	9.3	8.6	4.0
March	7.2	38.9	46.1	13.6	59.8	30.0	7.7	8.8	6.5	8.1	7.1	3.5
WESTERN AUSTRALIA												
<b>1999</b>												
January	9.0	48.2	57.2	16.8	74.0	21.8	7.2	8.1	6.8	7.7	6.7	3.7
February	8.0	50.4	58.4	20.8	79.2	22.0	7.6	8.3	7.9	8.2	5.9	3.8
March	5.9	41.9	47.8	22.6	70.4	18.0	6.4	7.0	8.1	7.3	4.3	3.2
April	7.1	43.2	50.3	19.9	70.2	18.4	6.6	7.2	7.3	7.3	5.2	3.3
May	7.6	39.9	47.5	13.9	61.4	21.6	6.1	6.9	5.2	6.4	5.6	3.0
June	8.0	39.7	47.7	12.8	60.5	21.5	6.0	6.9	4.8	6.3	5.8	3.0
July	7.5	35.6	43.1	15.1	58.2	19.3	5.4	6.2	5.7	6.0	5.5	2.7
August	7.7	36.9	44.6	15.1	59.7	20.7	5.6	6.4	5.7	6.2	5.7	2.8
September	8.5	44.8	53.2	15.9	69.1	21.9	6.6	7.5	5.8	7.0	6.2	3.4
October	6.7	38.4	45.1	16.4	61.5	18.2	5.7	6.3	6.1	6.3	4.9	2.9
November	7.6	41.9	49.5	14.3	63.8	18.7	6.1	6.9	5.3	6.4	5.5	3.1
December	8.2	38.3	46.5	15.0	61.5	19.2	5.6	6.4	5.6	6.2	6.0	2.9
<b>2000</b>												
January	8.5	47.6	56.1	18.1	74.2	19.8	7.0	7.8	6.8	7.5	6.2	3.6
February	8.7	43.6	52.3	19.2	71.6	21.3	6.4	7.2	7.1	7.2	6.3	3.3
March	6.9	43.9	50.8	18.3	69.1	19.3	6.5	7.1	6.6	7.0	5.0	3.3
TASMANIA												
<b>1999</b>												
January	3.9	17.4	21.3	3.1	24.4	35.6	11.9	13.6	5.3	11.3	11.4	5.2
February	3.3	16.4	19.7	3.9	23.6	30.6	11.3	12.7	6.4	10.9	9.6	4.9
March	2.6	15.7	18.3	5.2	23.5	27.8	10.8	11.8	8.3	10.8	7.4	4.7
April	2.4	13.7	16.1	4.7	20.8	24.0	9.5	10.4	7.3	9.5	6.8	4.1
May	2.7	14.0	16.7	4.3	21.1	26.9	9.7	10.8	6.9	9.7	7.9	4.2
June	2.6	13.6	16.2	4.1	20.3	30.1	9.5	10.6	6.4	9.4	7.5	4.1
July	1.9	13.1	15.0	3.7	18.7	24.9	9.1	9.8	6.0	8.7	5.4	3.9
August	1.9	13.7	15.6	2.7	18.3	24.2	9.3	10.0	4.7	8.6	5.6	4.1
September	2.5	13.6	16.1	4.1	20.2	30.1	9.1	10.2	7.0	9.3	7.2	4.1
October	1.9	13.5	15.4	4.9	20.3	21.9	9.2	9.9	8.1	9.4	5.3	4.0
November	2.0	13.9	15.9	5.1	21.0	24.7	9.4	10.2	8.3	9.6	5.9	4.1
December	3.2	13.3	16.4	4.6	21.0	32.1	9.0	10.4	7.0	9.4	9.1	4.0
<b>2000</b>												
January	2.8	13.8	16.6	4.3	20.8	31.2	9.4	10.6	6.8	9.5	8.0	4.1
February	3.1	12.0	15.1	5.1	20.2	32.8	8.3	9.7	8.1	9.3	8.9	3.6
March	2.4	12.6	14.9	5.1	20.0	26.9	8.7	9.7	7.7	9.1	6.8	3.7

UNEMPLOYED PERSONS—Northern Territory and Australian Capital Territory: **Original**

Month	NUMBER OF UNEMPLOYED PERSONS.....					UNEMPLOYMENT RATE.....					UNEMPLOYMENT TO POPULATION RATIO	
	Aged 15-19 looking for f/t work	Aged 20 and over looking for f/t work	Total looking for f/t work	Looking for p/t work	Total	Aged 15-19 looking for f/t work	Aged 20 and over looking for f/t work	Total looking for f/t work	Looking for p/t work	Total	Aged 15-19 looking for f/t work	Aged 20 and over looking for f/t work
	'000	'000	'000	'000	'000	%	%	%	%	%	%	%
<b>NORTHERN TERRITORY</b>												
<b>1999</b>												
January	* 0.5	2.7	3.2	* 1.2	4.4	* 14.1	3.7	4.2	* 6.7	4.7	* 3.4	2.2
February	* 0.8	2.4	3.2	* 0.8	4.1	* 29.4	3.2	4.2	* 3.7	4.1	* 5.9	1.9
March	* 0.8	3.3	4.1	1.5	5.6	* 26.8	4.3	5.2	6.8	5.6	* 5.8	2.6
April	* 0.3	2.8	3.1	1.0	4.1	* 12.4	3.8	4.1	4.3	4.1	* 2.3	2.3
May	* 0.4	2.2	2.6	1.4	3.9	* 14.8	3.0	3.4	5.3	3.9	* 2.6	1.8
June	* 0.5	2.2	2.7	1.0	3.7	* 15.2	3.1	3.7	4.4	3.8	* 3.5	1.8
July	* 0.3	2.1	2.4	1.4	3.8	* 8.0	3.1	3.3	6.7	4.0	* 2.0	1.7
August	* 0.6	1.5	2.1	1.0	3.1	* 15.5	2.1	2.7	4.2	3.1	* 3.9	1.2
September	* 0.4	2.8	3.2	* 0.9	4.1	* 9.6	3.7	4.0	* 4.2	4.0	* 2.7	2.2
October	* 0.6	2.2	2.8	* 0.7	3.5	* 15.2	3.0	3.6	* 3.5	3.6	* 3.9	1.8
November	1.0	1.3	2.3	* 0.9	3.3	21.8	1.9	3.1	* 4.5	3.4	6.8	1.1
December	* 0.7	3.0	3.7	1.0	4.7	* 19.0	4.0	4.7	5.3	4.9	* 5.1	2.4
<b>2000</b>												
January	1.0	3.1	4.0	1.2	5.3	30.5	4.5	5.6	6.1	5.7	6.7	2.5
February	* 0.5	3.9	4.4	1.6	6.0	* 17.0	5.4	5.8	9.2	6.4	* 3.3	3.1
March	* 0.3	2.9	3.2	* 0.8	4.0	* 9.0	3.8	4.0	* 4.2	4.1	* 2.1	2.3
<b>AUSTRALIAN CAPITAL TERRITORY</b>												
<b>1999</b>												
January	1.2	6.4	7.6	3.2	10.8	30.6	5.3	6.2	7.9	6.6	5.2	3.0
February	* 0.6	6.6	7.2	4.4	11.6	* 19.3	5.4	5.7	10.1	6.9	* 2.6	3.1
March	1.0	6.0	7.0	4.6	11.7	28.9	5.1	5.8	10.2	7.0	4.1	2.8
April	* 0.9	6.1	7.1	2.8	9.8	* 26.7	5.2	5.8	6.2	5.9	* 3.9	2.9
May	* 0.7	5.4	6.1	4.1	10.2	* 20.9	4.5	4.9	9.0	6.0	* 2.8	2.6
June	* 0.6	4.3	4.9	3.3	8.3	* 22.9	3.6	4.1	7.0	4.9	* 2.7	2.0
July	* 0.6	4.9	5.5	3.2	8.7	* 13.5	4.1	4.4	7.2	5.1	* 2.6	2.3
August	* 1.0	5.1	6.1	3.6	9.7	* 25.5	4.2	4.9	8.0	5.7	* 4.3	2.4
September	1.2	4.8	6.1	3.4	9.5	31.3	4.0	4.8	7.1	5.5	5.3	2.3
October	* 0.7	5.1	5.8	3.5	9.3	* 18.1	4.1	4.5	7.5	5.3	* 3.0	2.4
November	* 0.9	5.7	6.6	3.2	9.8	* 24.0	4.6	5.1	7.0	5.6	* 3.9	2.6
December	* 0.9	5.7	6.6	2.4	9.0	* 23.9	4.5	5.1	5.4	5.2	* 3.9	2.6
<b>2000</b>												
January	1.3	6.4	7.7	2.8	10.5	27.3	5.1	5.9	6.5	6.1	5.5	3.0
February	1.3	5.3	6.6	3.7	10.3	25.8	4.1	5.0	8.7	5.9	5.5	2.5
March	* 0.9	5.4	6.3	4.0	10.3	* 20.5	4.2	4.7	9.7	5.9	* 3.8	2.5



## LABOUR FORCE STATUS (AGED 15 AND OVER)—New South Wales(a)

SEASONALLY ADJUSTED.....

TREND.....

Month	SEASONALLY ADJUSTED.....					TREND.....					Civilian population aged 15 and over '000
	Employed full time '000	Total employed '000	Total unemployed '000	Unemp- loyment rate %	Partic- ipation rate %	Employed full time '000	Total employed '000	Total unemployed '000	Unemp- loyment rate %	Partic- ipation rate %	
<b>MALES</b>											
<b>1999</b>											
January	1 444.9	1 638.9	130.7	7.4	71.4	1 448.3	1 645.2	124.8	7.1	71.4	2 477.5
February	1 453.1	1 651.9	121.0	6.8	71.5	1 450.8	1 649.5	123.2	6.9	71.5	2 480.3
March	1 457.7	1 661.9	121.2	6.8	71.8	1 455.0	1 654.8	120.4	6.8	71.5	2 483.1
April	1 458.9	1 656.9	118.1	6.7	71.4	1 460.6	1 661.1	117.2	6.6	71.5	2 486.6
May	1 469.5	1 666.8	113.2	6.4	71.5	1 466.9	1 667.1	115.0	6.5	71.6	2 490.0
June	1 466.9	1 670.6	112.2	6.3	71.5	1 473.4	1 672.4	113.9	6.4	71.7	2 493.4
July	1 482.6	1 681.1	109.6	6.1	71.7	1 480.4	1 677.0	113.3	6.3	71.7	2 496.4
August	1 490.0	1 678.8	115.2	6.4	71.8	1 487.3	1 680.9	113.0	6.3	71.8	2 499.4
September	1 491.4	1 684.6	121.7	6.7	72.2	1 493.5	1 683.8	112.4	6.3	71.8	2 502.4
October	1 499.2	1 689.0	110.2	6.1	71.8	1 497.8	1 685.8	111.7	6.2	71.7	2 506.4
November	1 502.4	1 686.4	97.0	5.4	71.0	1 500.2	1 687.6	110.5	6.1	71.6	2 510.5
December	1 505.3	1 688.3	118.2	6.5	71.8	1 501.1	1 689.9	109.4	6.1	71.6	2 514.5
<b>2000</b>											
January	1 495.8	1 685.9	111.5	6.2	71.4	1 501.4	1 692.7	108.6	6.0	71.6	2 517.7
February	1 503.5	1 701.9	103.3	5.7	71.6	1 501.2	1 695.8	108.0	6.0	71.6	2 520.9
March	1 497.8	1 701.6	109.7	6.1	71.8	1 500.8	1 698.4	107.6	6.0	71.6	2 524.0
<b>FEMALES</b>											
<b>1999</b>											
January	737.2	1 247.9	86.9	6.5	52.0	737.4	1 246.6	92.7	6.9	52.2	2 565.1
February	743.2	1 255.9	88.4	6.6	52.4	737.0	1 247.7	92.2	6.9	52.2	2 567.7
March	734.9	1 242.3	98.4	7.3	52.2	737.5	1 249.0	91.7	6.8	52.2	2 570.2
April	729.3	1 246.3	94.7	7.1	52.1	738.7	1 250.1	91.5	6.8	52.1	2 573.2
May	740.1	1 253.7	90.7	6.7	52.2	740.1	1 251.3	91.5	6.8	52.1	2 576.1
June	752.6	1 256.2	89.4	6.6	52.2	741.8	1 253.4	91.0	6.8	52.1	2 579.1
July	746.1	1 257.1	82.4	6.2	51.9	743.7	1 257.1	89.9	6.7	52.2	2 582.0
August	740.3	1 257.3	93.1	6.9	52.2	746.3	1 261.2	88.5	6.6	52.2	2 584.9
September	743.3	1 264.4	96.1	7.1	52.6	749.6	1 265.8	86.8	6.4	52.3	2 587.9
October	757.5	1 277.9	79.8	5.9	52.4	753.5	1 271.0	84.9	6.3	52.3	2 591.3
November	755.5	1 274.1	79.9	5.9	52.2	758.4	1 277.5	83.0	6.1	52.4	2 594.8
December	768.1	1 283.2	81.7	6.0	52.5	763.5	1 284.8	81.5	6.0	52.6	2 598.3
<b>2000</b>											
January	774.1	1 288.0	78.0	5.7	52.5	767.8	1 292.2	80.7	5.9	52.8	2 600.7
February	761.0	1 302.6	83.1	6.0	53.2	771.4	1 299.3	80.5	5.8	53.0	2 603.2
March	777.8	1 312.3	83.7	6.0	53.6	773.9	1 305.4	80.9	5.8	53.2	2 605.6
<b>PERSONS</b>											
<b>1999</b>											
January	2 182.0	2 886.8	217.6	7.0	61.6	2 185.7	2 891.8	217.5	7.0	61.7	5 042.6
February	2 196.3	2 907.8	209.3	6.7	61.8	2 187.8	2 897.2	215.4	6.9	61.7	5 048.0
March	2 192.6	2 904.2	219.6	7.0	61.8	2 192.5	2 903.8	212.1	6.8	61.7	5 053.4
April	2 188.2	2 903.2	212.7	6.8	61.6	2 199.3	2 911.2	208.7	6.7	61.7	5 059.8
May	2 209.6	2 920.5	203.8	6.5	61.7	2 206.9	2 918.4	206.5	6.6	61.7	5 066.1
June	2 219.5	2 926.9	201.6	6.4	61.7	2 215.1	2 925.8	205.0	6.5	61.7	5 072.5
July	2 228.6	2 938.2	192.1	6.1	61.6	2 224.1	2 934.1	203.2	6.5	61.8	5 078.5
August	2 230.4	2 936.1	208.2	6.6	61.8	2 233.6	2 942.1	201.4	6.4	61.8	5 084.4
September	2 234.7	2 948.9	217.8	6.9	62.2	2 243.0	2 949.5	199.2	6.3	61.8	5 090.3
October	2 256.7	2 967.0	190.0	6.0	61.9	2 251.4	2 956.8	196.6	6.2	61.9	5 097.8
November	2 257.9	2 960.5	176.9	5.6	61.5	2 258.6	2 965.1	193.5	6.1	61.9	5 105.3
December	2 273.4	2 971.5	199.9	6.3	62.0	2 264.6	2 974.7	190.9	6.0	61.9	5 112.8
<b>2000</b>											
January	2 269.9	2 974.0	189.5	6.0	61.8	2 269.2	2 984.9	189.4	6.0	62.0	5 118.4
February	2 264.5	3 004.5	186.4	5.8	62.3	2 272.6	2 995.1	188.6	5.9	62.1	5 124.0
March	2 275.7	3 013.9	193.3	6.0	62.5	2 274.7	3 003.8	188.5	5.9	62.3	5 129.7

(a) Trend estimates for September 1999 to February 2000 have been revised.

## LABOUR FORCE STATUS (AGED 15 AND OVER)—Victoria(a)

SEASONALLY ADJUSTED.....

TREND.....

Month	SEASONALLY ADJUSTED.....					TREND.....					Civilian population aged 15 and over '000
	Employed full time '000	Total employed '000	Total unemployed '000	Unemp-loyment rate %	Partic-ipation rate %	Employed full time '000	Total employed '000	Total unemployed '000	Unemp-loyment rate %	Partic-ipation rate %	
<b>MALES</b>											
<b>1999</b>											
January	1 060.9	1 226.9	101.0	7.6	72.7	1 068.1	1 226.2	101.1	7.6	72.7	1 826.2
February	1 079.0	1 232.4	101.7	7.6	73.0	1 069.9	1 227.8	102.4	7.7	72.8	1 828.4
March	1 086.9	1 237.3	95.6	7.2	72.8	1 071.5	1 229.9	104.1	7.8	72.9	1 830.5
April	1 065.5	1 229.8	113.9	8.5	73.3	1 072.8	1 232.1	105.5	7.9	73.0	1 832.9
May	1 059.6	1 216.6	110.7	8.3	72.3	1 074.1	1 234.4	105.8	7.9	73.0	1 835.3
June	1 077.6	1 247.7	101.9	7.6	73.4	1 075.5	1 236.9	104.6	7.8	73.0	1 837.7
July	1 081.7	1 242.6	100.4	7.5	73.0	1 077.3	1 239.1	102.3	7.6	72.9	1 840.0
August	1 084.3	1 239.9	100.1	7.5	72.7	1 078.8	1 240.5	99.5	7.4	72.7	1 842.3
September	1 080.9	1 243.5	96.5	7.2	72.6	1 079.6	1 240.8	96.7	7.2	72.5	1 844.7
October	1 078.3	1 242.1	91.9	6.9	72.2	1 079.5	1 240.5	94.4	7.1	72.2	1 847.6
November	1 072.6	1 230.9	93.4	7.1	71.6	1 079.3	1 240.5	92.7	7.0	72.0	1 850.5
December	1 081.6	1 244.1	95.0	7.1	72.3	1 080.6	1 242.0	90.9	6.8	71.9	1 853.5
<b>2000</b>											
January	1 077.4	1 240.1	87.3	6.6	71.5	1 083.0	1 244.4	89.2	6.7	71.9	1 855.6
February	1 095.9	1 255.9	83.3	6.2	72.1	1 085.8	1 247.0	87.7	6.6	71.8	1 857.8
March	1 088.3	1 248.6	89.5	6.7	71.9	1 088.6	1 249.2	86.7	6.5	71.8	1 860.0
<b>FEMALES</b>											
<b>1999</b>											
January	535.7	943.2	72.9	7.2	53.3	530.5	939.0	75.3	7.4	53.2	1 907.2
February	529.7	940.1	76.7	7.5	53.3	529.8	938.6	74.4	7.3	53.1	1 909.2
March	531.5	940.4	75.1	7.4	53.1	529.1	939.1	74.1	7.3	53.0	1 911.2
April	524.8	935.3	72.8	7.2	52.7	528.0	940.4	74.1	7.3	53.0	1 913.5
May	525.9	941.6	74.0	7.3	53.0	527.5	943.2	74.3	7.3	53.1	1 915.9
June	527.6	946.8	73.4	7.2	53.2	527.7	947.7	74.5	7.3	53.3	1 918.2
July	530.3	957.5	78.0	7.5	53.9	529.1	953.7	74.4	7.2	53.5	1 920.6
August	533.4	959.0	71.4	6.9	53.6	531.8	960.2	73.9	7.1	53.8	1 922.9
September	533.1	965.0	75.6	7.3	54.1	535.2	965.9	73.2	7.0	54.0	1 925.3
October	536.5	973.4	72.4	6.9	54.2	538.8	970.2	72.4	6.9	54.1	1 928.0
November	541.1	972.2	69.9	6.7	54.0	542.3	973.2	72.0	6.9	54.1	1 930.7
December	552.9	981.1	70.4	6.7	54.4	545.4	975.6	72.2	6.9	54.2	1 933.4
<b>2000</b>											
January	548.9	972.2	73.9	7.1	54.1	547.9	977.7	72.8	6.9	54.3	1 935.4
February	544.1	976.7	74.4	7.1	54.3	549.9	979.7	73.7	7.0	54.4	1 937.5
March	552.9	985.6	75.8	7.1	54.7	551.4	981.1	74.3	7.0	54.4	1 939.5
<b>PERSONS</b>											
<b>1999</b>											
January	1 596.6	2 170.1	173.9	7.4	62.8	1 598.6	2 165.2	176.4	7.5	62.7	3 733.5
February	1 608.6	2 172.5	178.3	7.6	62.9	1 599.8	2 166.4	176.8	7.5	62.7	3 737.6
March	1 618.4	2 177.7	170.7	7.3	62.8	1 600.6	2 169.0	178.2	7.6	62.7	3 741.8
April	1 590.2	2 165.0	186.8	7.9	62.8	1 600.9	2 172.4	179.6	7.6	62.8	3 746.5
May	1 585.5	2 158.2	184.7	7.9	62.5	1 601.6	2 177.6	180.1	7.6	62.9	3 751.2
June	1 605.2	2 194.5	175.4	7.4	63.1	1 603.2	2 184.6	179.2	7.6	62.9	3 755.9
July	1 611.9	2 200.1	178.5	7.5	63.3	1 606.4	2 192.8	176.7	7.5	63.0	3 760.6
August	1 617.7	2 198.8	171.5	7.2	63.0	1 610.5	2 200.7	173.4	7.3	63.1	3 765.3
September	1 614.0	2 208.5	172.2	7.2	63.1	1 614.7	2 206.7	169.9	7.1	63.0	3 770.0
October	1 614.8	2 215.5	164.3	6.9	63.0	1 618.3	2 210.7	166.8	7.0	63.0	3 775.6
November	1 613.7	2 203.1	163.3	6.9	62.6	1 621.6	2 213.7	164.7	6.9	62.9	3 781.2
December	1 634.5	2 225.2	165.4	6.9	63.1	1 626.0	2 217.6	163.1	6.9	62.9	3 786.8
<b>2000</b>											
January	1 626.3	2 212.3	161.2	6.8	62.6	1 631.0	2 222.1	162.0	6.8	62.9	3 791.1
February	1 639.9	2 232.6	157.8	6.6	63.0	1 635.7	2 226.6	161.4	6.8	62.9	3 795.3
March	1 641.2	2 234.3	165.3	6.9	63.2	1 640.0	2 230.3	161.1	6.7	63.0	3 799.6

(a) Trend estimates for September 1999 to February 2000 have been revised.

## LABOUR FORCE STATUS (AGED 15 AND OVER)—Queensland(a)

SEASONALLY ADJUSTED.....

TREND.....

Month	SEASONALLY ADJUSTED.....					TREND.....					Civilian population aged 15 and over '000
	Employed full time '000	Total employed '000	Total unemployed '000	Unemployment rate %	Participation rate %	Employed full time '000	Total employed '000	Total unemployed '000	Unemployment rate %	Participation rate %	
<b>MALES</b>											
<b>1999</b>											
January	806.6	924.6	78.3	7.8	74.2	805.1	924.8	80.3	8.0	74.4	1 351.4
February	804.9	922.8	81.9	8.2	74.2	806.2	925.9	79.5	7.9	74.3	1 353.7
March	808.2	928.0	74.7	7.5	73.9	807.5	926.7	79.4	7.9	74.2	1 356.1
April	810.3	929.6	80.4	8.0	74.4	809.6	927.5	79.9	7.9	74.2	1 358.2
May	805.9	926.2	83.9	8.3	74.3	812.0	927.7	80.5	8.0	74.1	1 360.3
June	817.4	927.3	81.7	8.1	74.1	814.0	927.3	81.1	8.0	74.0	1 362.4
July	816.9	924.4	80.2	8.0	73.6	815.4	926.4	81.2	8.1	73.8	1 364.6
August	819.1	933.5	79.1	7.8	74.1	816.2	925.4	81.1	8.1	73.6	1 366.8
September	817.4	922.1	82.2	8.2	73.4	816.1	925.1	81.0	8.1	73.5	1 369.1
October	805.4	914.4	83.4	8.4	72.7	815.5	925.8	80.9	8.0	73.4	1 371.6
November	820.4	936.1	76.2	7.5	73.7	814.8	927.5	81.1	8.0	73.4	1 374.1
December	818.2	927.7	83.5	8.3	73.5	814.6	929.6	81.2	8.0	73.4	1 376.6
<b>2000</b>											
January	811.3	932.2	83.7	8.2	73.7	814.8	931.7	81.2	8.0	73.5	1 378.6
February	811.9	937.2	78.5	7.7	73.6	815.0	933.3	81.1	8.0	73.5	1 380.7
March	819.2	931.6	81.2	8.0	73.2	815.6	935.2	80.8	8.0	73.5	1 382.7
<b>FEMALES</b>											
<b>1999</b>											
January	395.0	708.2	66.1	8.5	56.3	391.6	704.5	63.4	8.3	55.8	1 376.2
February	385.6	702.4	59.9	7.9	55.3	393.4	707.0	63.0	8.2	55.8	1 378.7
March	395.2	706.2	63.8	8.3	55.8	394.7	709.6	62.6	8.1	55.9	1 381.2
April	401.1	717.1	60.8	7.8	56.2	395.1	712.1	62.3	8.0	56.0	1 383.3
May	392.6	717.3	63.1	8.1	56.3	394.9	714.5	62.0	8.0	56.0	1 385.4
June	397.0	714.4	64.5	8.3	56.1	394.3	716.5	62.1	8.0	56.1	1 387.5
July	394.2	716.9	61.5	7.9	56.0	393.4	718.2	62.7	8.0	56.2	1 389.7
August	385.6	720.0	58.5	7.5	55.9	392.7	720.1	63.8	8.1	56.3	1 391.9
September	393.1	720.9	65.5	8.3	56.4	392.8	722.3	64.7	8.2	56.4	1 394.1
October	398.9	726.2	70.8	8.9	57.1	393.8	724.7	65.4	8.3	56.6	1 396.6
November	392.9	726.0	65.3	8.2	56.6	395.2	726.9	65.5	8.3	56.6	1 399.1
December	395.2	731.6	66.2	8.3	56.9	396.5	728.3	65.3	8.2	56.6	1 401.6
<b>2000</b>											
January	401.1	728.3	62.5	7.9	56.3	397.6	729.1	64.9	8.2	56.6	1 403.8
February	395.0	730.4	60.3	7.6	56.2	398.6	729.5	64.6	8.1	56.5	1 405.9
March	401.0	726.7	69.0	8.7	56.5	398.9	729.5	64.2	8.1	56.4	1 408.1
<b>PERSONS</b>											
<b>1999</b>											
January	1 201.6	1 632.8	144.4	8.1	65.2	1 196.7	1 629.3	143.6	8.1	65.0	2 727.6
February	1 190.5	1 625.2	141.8	8.0	64.7	1 199.6	1 632.9	142.5	8.0	65.0	2 732.4
March	1 203.5	1 634.2	138.6	7.8	64.8	1 202.2	1 636.2	142.1	8.0	65.0	2 737.3
April	1 211.4	1 646.7	141.2	7.9	65.2	1 204.8	1 639.5	142.2	8.0	65.0	2 741.5
May	1 198.5	1 643.6	147.0	8.2	65.2	1 206.9	1 642.2	142.6	8.0	65.0	2 745.7
June	1 214.5	1 641.7	146.3	8.2	65.0	1 208.3	1 643.8	143.1	8.0	65.0	2 749.9
July	1 211.1	1 641.2	141.7	7.9	64.7	1 208.7	1 644.6	143.9	8.0	64.9	2 754.3
August	1 204.7	1 653.5	137.6	7.7	64.9	1 208.9	1 645.5	144.9	8.1	64.9	2 758.7
September	1 210.4	1 643.0	147.7	8.2	64.8	1 208.9	1 647.4	145.7	8.1	64.9	2 763.2
October	1 204.3	1 640.6	154.2	8.6	64.8	1 209.3	1 650.6	146.3	8.1	64.9	2 768.2
November	1 213.2	1 662.1	141.4	7.8	65.0	1 210.0	1 654.4	146.7	8.1	64.9	2 773.2
December	1 213.3	1 659.3	149.8	8.3	65.1	1 211.1	1 657.9	146.5	8.1	65.0	2 778.2
<b>2000</b>											
January	1 212.4	1 660.5	146.2	8.1	64.9	1 212.3	1 660.8	146.1	8.1	64.9	2 782.4
February	1 206.9	1 667.6	138.8	7.7	64.8	1 213.6	1 662.8	145.7	8.1	64.9	2 786.6
March	1 220.2	1 658.3	150.1	8.3	64.8	1 214.5	1 664.7	145.0	8.0	64.9	2 790.8

(a) Trend estimates for September 1999 to February 2000 have been revised.

## LABOUR FORCE STATUS (AGED 15 AND OVER)—South Australia(a)

SEASONALLY ADJUSTED.....

TREND.....

Month	SEASONALLY ADJUSTED.....					TREND.....					Civilian population aged 15 and over '000
	Employed full time '000	Total employed '000	Total unemployed '000	Unemp- loyment rate %	Partic- ipation rate %	Employed full time '000	Total employed '000	Total unemployed '000	Unemp- loyment rate %	Partic- ipation rate %	
<b>MALES</b>											
<b>1999</b>											
January	316.1	367.5	41.4	10.1	70.1	319.3	369.1	40.5	9.9	70.2	583.4
February	321.3	372.7	38.3	9.3	70.4	320.1	369.9	39.4	9.6	70.1	583.8
March	325.3	371.0	38.7	9.5	70.1	320.9	370.7	38.0	9.3	70.0	584.2
April	319.2	367.1	36.2	9.0	69.0	321.3	371.6	36.7	9.0	69.8	584.6
May	321.7	374.3	36.5	8.9	70.2	320.9	372.4	35.5	8.7	69.7	585.0
June	319.4	374.5	33.6	8.2	69.7	319.7	372.9	34.9	8.5	69.7	585.3
July	318.4	373.9	33.2	8.1	69.5	318.2	373.2	34.6	8.5	69.6	585.7
August	317.0	372.8	36.8	9.0	69.9	316.8	373.3	34.7	8.5	69.6	586.0
September	316.4	373.3	33.2	8.2	69.3	315.8	373.5	34.9	8.5	69.7	586.4
October	314.0	373.4	37.4	9.1	70.0	315.9	374.1	35.1	8.6	69.7	586.8
November	316.2	372.5	34.5	8.5	69.3	317.1	375.4	35.1	8.6	69.9	587.1
December	319.8	380.8	34.7	8.3	70.7	319.3	377.2	34.9	8.5	70.1	587.5
<b>2000</b>											
January	317.9	376.9	33.7	8.2	69.8	322.0	379.1	34.6	8.4	70.4	587.8
February	329.0	382.0	36.0	8.6	71.1	324.8	380.9	34.3	8.3	70.6	588.1
March	330.1	383.6	33.1	7.9	70.8	327.5	382.4	34.2	8.2	70.8	588.4
<b>FEMALES</b>											
<b>1999</b>											
January	146.8	285.9	27.0	8.6	51.3	147.6	286.6	25.8	8.3	51.2	610.1
February	148.6	285.8	25.9	8.3	51.1	148.2	286.7	25.8	8.3	51.2	610.5
March	148.6	287.6	25.9	8.3	51.3	149.1	286.7	25.8	8.3	51.2	610.9
April	150.1	287.1	24.4	7.8	51.0	150.0	287.1	25.8	8.2	51.2	611.3
May	152.7	287.1	27.1	8.6	51.4	150.8	287.6	25.8	8.2	51.2	611.6
June	149.9	287.3	25.6	8.2	51.1	151.3	288.3	25.8	8.2	51.3	611.9
July	151.4	290.5	25.0	7.9	51.5	151.8	289.3	25.8	8.2	51.5	612.3
August	153.4	291.3	25.9	8.2	51.8	152.3	290.9	25.7	8.1	51.7	612.6
September	151.4	292.6	26.2	8.2	52.0	152.6	292.8	25.3	8.0	51.9	613.0
October	153.0	290.8	25.6	8.1	51.6	152.8	294.8	24.9	7.8	52.1	613.3
November	153.1	298.0	23.4	7.3	52.4	152.7	296.1	24.7	7.7	52.3	613.6
December	156.2	300.4	24.3	7.5	52.9	152.6	296.8	24.6	7.7	52.4	613.8
<b>2000</b>											
January	147.3	300.1	22.8	7.1	52.6	152.4	296.9	24.7	7.7	52.4	614.0
February	152.9	292.4	27.9	8.7	52.1	152.3	296.4	25.0	7.8	52.3	614.2
March	153.8	293.2	25.1	7.9	51.8	152.4	295.7	25.2	7.9	52.2	614.4
<b>PERSONS</b>											
<b>1999</b>											
January	462.9	653.5	68.4	9.5	60.5	466.9	655.7	66.4	9.2	60.5	1 193.5
February	469.9	658.5	64.2	8.9	60.5	468.4	656.5	65.2	9.0	60.4	1 194.3
March	473.9	658.5	64.7	8.9	60.5	470.0	657.5	63.9	8.9	60.4	1 195.1
April	469.3	654.2	60.6	8.5	59.8	471.3	658.7	62.4	8.7	60.3	1 195.8
May	474.4	661.4	63.6	8.8	60.6	471.7	660.0	61.3	8.5	60.3	1 196.6
June	469.3	661.8	59.2	8.2	60.2	471.0	661.3	60.7	8.4	60.3	1 197.3
July	469.8	664.5	58.2	8.1	60.3	470.0	662.5	60.5	8.4	60.4	1 198.0
August	470.4	664.1	62.7	8.6	60.6	469.1	664.2	60.4	8.3	60.4	1 198.7
September	467.8	665.9	59.4	8.2	60.5	468.5	666.4	60.2	8.3	60.6	1 199.4
October	466.9	664.3	63.0	8.7	60.6	468.6	668.9	60.0	8.2	60.7	1 200.0
November	469.3	670.5	58.0	8.0	60.7	469.8	671.5	59.8	8.2	60.9	1 200.7
December	476.0	681.2	59.0	8.0	61.6	471.9	674.0	59.5	8.1	61.1	1 201.3
<b>2000</b>											
January	465.2	676.9	56.5	7.7	61.0	474.4	675.9	59.4	8.1	61.2	1 201.8
February	481.9	674.3	63.9	8.7	61.4	477.2	677.3	59.3	8.0	61.3	1 202.3
March	483.9	676.8	58.1	7.9	61.1	480.0	678.1	59.5	8.1	61.3	1 202.8

(a) Trend estimates for September 1999 to February 2000 have been revised.

## LABOUR FORCE STATUS (AGED 15 AND OVER)—Western Australia(a)

Month	SEASONALLY ADJUSTED.....					TREND.....					Civilian population aged 15 and over '000
	Employed full time '000	Total employed '000	Total unemployed '000	Unemp-loyment rate %	Partic-ipation rate %	Employed full time '000	Total employed '000	Total unemployed '000	Unemp-loyment rate %	Partic-ipation rate %	
<b>MALES</b>											
<b>1999</b>											
January	446.1	509.9	40.7	7.4	76.1	445.8	509.5	40.9	7.4	76.0	723.8
February	444.7	508.0	41.0	7.5	75.7	445.6	509.9	40.3	7.3	75.9	725.1
March	446.2	511.6	38.1	6.9	75.7	445.2	510.2	39.4	7.2	75.7	726.4
April	447.7	513.5	39.7	7.2	76.0	444.8	510.4	38.5	7.0	75.4	727.7
May	441.4	509.1	37.0	6.8	74.9	444.5	510.7	37.9	6.9	75.3	729.0
June	444.0	508.9	38.4	7.0	74.9	444.9	511.3	37.8	6.9	75.2	730.2
July	446.2	512.6	36.9	6.7	75.1	446.2	512.6	38.1	6.9	75.3	731.4
August	448.4	514.9	37.5	6.8	75.4	448.2	514.5	38.7	7.0	75.5	732.5
September	449.7	516.0	40.6	7.3	75.9	450.6	516.8	39.4	7.1	75.8	733.7
October	454.2	521.4	41.2	7.3	76.5	453.0	519.2	39.9	7.1	76.0	735.1
November	456.1	520.8	41.3	7.3	76.3	455.0	521.3	40.1	7.1	76.2	736.5
December	458.4	523.7	36.1	6.5	75.9	456.7	522.9	40.0	7.1	76.3	737.9
<b>2000</b>											
January	453.8	522.1	42.4	7.5	76.4	458.1	524.4	39.7	7.0	76.4	738.8
February	461.9	528.4	39.1	6.9	76.7	459.4	525.7	39.4	7.0	76.4	739.7
March	460.5	525.7	38.2	6.8	76.1	460.4	526.6	38.9	6.9	76.4	740.7
<b>FEMALES</b>											
<b>1999</b>											
January	203.2	383.5	26.4	6.5	56.5	201.7	383.6	27.5	6.7	56.7	725.0
February	201.4	382.9	28.1	6.8	56.6	201.2	383.7	28.0	6.8	56.7	726.2
March	196.6	384.5	28.0	6.8	56.7	200.9	384.3	28.2	6.8	56.7	727.4
April	202.2	384.3	31.9	7.7	57.1	201.0	385.6	27.9	6.7	56.8	728.6
May	201.0	386.4	26.3	6.4	56.6	201.6	387.0	27.3	6.6	56.8	729.7
June	204.8	391.7	24.1	5.8	56.9	202.9	388.6	26.7	6.4	56.8	730.8
July	205.3	391.5	25.9	6.2	57.0	204.9	390.5	26.2	6.3	56.9	731.9
August	205.9	389.8	26.2	6.3	56.7	207.1	392.7	25.9	6.2	57.1	733.0
September	205.7	393.5	26.9	6.4	57.3	209.2	395.3	25.8	6.1	57.4	734.1
October	212.0	396.4	25.9	6.1	57.4	211.0	397.9	25.7	6.1	57.6	735.4
November	218.7	405.6	26.2	6.1	58.6	212.3	400.0	25.5	6.0	57.8	736.7
December	211.6	402.4	23.9	5.6	57.8	213.0	401.6	25.1	5.9	57.8	738.0
<b>2000</b>											
January	210.7	401.9	24.9	5.8	57.8	213.2	402.5	24.9	5.8	57.8	738.9
February	213.1	401.5	23.5	5.5	57.4	213.2	402.8	24.8	5.8	57.8	739.9
March	213.1	401.3	26.7	6.2	57.8	213.1	402.7	24.8	5.8	57.7	740.9
<b>PERSONS</b>											
<b>1999</b>											
January	649.2	893.4	67.1	7.0	66.3	647.6	893.1	68.4	7.1	66.4	1 448.8
February	646.1	891.0	69.1	7.2	66.1	646.8	893.6	68.3	7.1	66.3	1 451.3
March	642.8	896.1	66.1	6.9	66.2	646.1	894.6	67.6	7.0	66.2	1 453.9
April	649.8	897.8	71.6	7.4	66.6	645.8	896.0	66.4	6.9	66.1	1 456.3
May	642.4	895.4	63.4	6.6	65.7	646.1	897.6	65.2	6.8	66.0	1 458.7
June	648.8	900.6	62.4	6.5	65.9	647.8	899.8	64.4	6.7	66.0	1 461.0
July	651.5	904.1	62.7	6.5	66.1	651.0	903.1	64.3	6.6	66.1	1 463.3
August	654.3	904.7	63.7	6.6	66.1	655.2	907.2	64.6	6.6	66.3	1 465.6
September	655.4	909.5	67.5	6.9	66.6	659.8	912.1	65.2	6.7	66.6	1 467.8
October	666.2	917.8	67.1	6.8	67.0	664.0	917.1	65.6	6.7	66.8	1 470.5
November	674.8	926.4	67.5	6.8	67.5	667.3	921.3	65.6	6.6	67.0	1 473.2
December	670.0	926.1	60.1	6.1	66.8	669.6	924.5	65.1	6.6	67.1	1 475.9
<b>2000</b>											
January	664.4	924.0	67.3	6.8	67.1	671.4	926.9	64.6	6.5	67.1	1 477.8
February	674.9	929.9	62.6	6.3	67.1	672.6	928.5	64.2	6.5	67.1	1 479.7
March	673.6	927.0	64.9	6.5	66.9	673.5	929.3	63.8	6.4	67.1	1 481.6

(a) Trend estimates for September 1999 to February 2000 have been revised.

## LABOUR FORCE STATUS (AGED 15 AND OVER)—Tasmania(a)

SEASONALLY ADJUSTED.....

TREND.....

Month	SEASONALLY ADJUSTED.....					TREND.....					Civilian population aged 15 and over '000
	Employed full time '000	Total employed '000	Total unemployed '000	Unemployment rate %	Participation rate %	Employed full time '000	Total employed '000	Total unemployed '000	Unemployment rate %	Participation rate %	
<b>MALES</b>											
<b>1999</b>											
January	92.0	107.1	15.2	12.5	67.8	92.3	107.8	14.4	11.8	67.7	180.4
February	90.1	107.1	15.1	12.4	67.8	92.0	107.8	14.6	12.0	67.9	180.4
March	91.6	107.8	15.0	12.2	68.1	92.0	108.1	14.7	12.0	68.1	180.4
April	93.3	109.1	13.9	11.3	68.2	92.6	108.7	14.4	11.7	68.3	180.4
May	93.7	109.2	14.6	11.8	68.7	93.5	109.5	13.9	11.3	68.4	180.3
June	94.5	111.0	13.4	10.8	69.0	94.7	110.1	13.3	10.8	68.5	180.3
July	95.1	110.5	12.7	10.3	68.3	95.7	110.4	12.9	10.5	68.4	180.2
August	97.4	110.5	11.5	9.4	67.7	96.5	110.4	12.7	10.3	68.3	180.2
September	97.1	110.2	13.1	10.6	68.4	96.9	110.4	12.6	10.3	68.3	180.2
October	96.4	109.8	12.5	10.2	67.9	96.9	110.2	12.6	10.3	68.2	180.2
November	97.2	109.9	13.5	10.9	68.5	96.6	110.1	12.5	10.2	68.0	180.2
December	96.5	110.5	12.4	10.1	68.2	96.0	110.0	12.3	10.1	67.8	180.2
<b>2000</b>											
January	95.6	109.8	11.8	9.7	67.5	95.4	109.8	11.9	9.8	67.6	180.2
February	93.5	109.7	10.9	9.1	66.9	94.7	109.7	11.5	9.5	67.3	180.2
March	94.2	109.3	11.0	9.1	66.7	94.2	109.6	11.1	9.2	67.0	180.3
<b>FEMALES</b>											
<b>1999</b>											
January	42.9	85.6	7.7	8.3	49.3	42.5	85.7	8.0	8.5	49.4	189.5
February	42.7	86.5	6.9	7.4	49.3	42.9	85.7	7.9	8.4	49.3	189.6
March	43.8	85.4	7.8	8.4	49.1	43.3	85.7	7.7	8.3	49.3	189.6
April	43.5	85.9	7.8	8.4	49.4	43.7	85.7	7.6	8.1	49.2	189.7
May	44.6	85.2	7.9	8.4	49.0	44.0	85.8	7.4	8.0	49.1	189.7
June	43.6	86.4	7.4	7.9	49.5	44.3	85.8	7.3	7.9	49.1	189.7
July	44.0	85.5	6.6	7.1	48.5	44.6	85.9	7.3	7.8	49.1	189.8
August	45.0	86.4	7.2	7.7	49.3	44.7	86.2	7.3	7.8	49.3	189.8
September	45.7	86.8	7.5	8.0	49.7	44.7	86.7	7.4	7.8	49.6	189.8
October	44.5	86.6	7.6	8.1	49.6	44.4	87.3	7.5	7.9	49.9	189.8
November	43.9	88.0	8.0	8.4	50.6	44.0	87.9	7.7	8.1	50.3	189.9
December	42.9	88.9	7.6	7.9	50.8	43.6	88.5	7.8	8.1	50.7	189.9
<b>2000</b>											
January	43.2	89.8	7.9	8.1	51.4	43.3	89.0	7.9	8.2	51.0	190.0
February	42.7	88.3	7.8	8.1	50.6	43.1	89.3	8.0	8.2	51.2	190.0
March	44.0	89.9	8.3	8.5	51.7	43.0	89.6	8.1	8.3	51.4	190.1
<b>PERSONS</b>											
<b>1999</b>											
January	134.8	192.7	23.0	10.6	58.3	134.8	193.5	22.4	10.4	58.4	369.9
February	132.8	193.7	22.0	10.2	58.3	134.9	193.4	22.5	10.4	58.4	370.0
March	135.4	193.3	22.8	10.5	58.4	135.3	193.8	22.4	10.4	58.4	370.0
April	136.8	195.0	21.7	10.0	58.6	136.2	194.5	22.0	10.2	58.5	370.0
May	138.3	194.4	22.4	10.3	58.6	137.6	195.3	21.3	9.9	58.5	370.0
June	138.1	197.4	20.9	9.6	59.0	139.0	195.9	20.7	9.5	58.5	370.0
July	139.1	196.0	19.2	8.9	58.2	140.3	196.3	20.2	9.3	58.5	370.0
August	142.5	196.8	18.6	8.6	58.2	141.2	196.7	20.0	9.2	58.6	370.0
September	142.8	197.0	20.6	9.5	58.8	141.6	197.1	20.0	9.2	58.7	370.0
October	140.9	196.4	20.2	9.3	58.5	141.3	197.5	20.2	9.3	58.8	370.0
November	141.0	197.9	21.5	9.8	59.3	140.6	198.0	20.2	9.3	59.0	370.0
December	139.4	199.4	20.0	9.1	59.3	139.6	198.4	20.1	9.2	59.0	370.1
<b>2000</b>											
January	138.8	199.6	19.6	9.0	59.2	138.7	198.8	19.8	9.1	59.1	370.2
February	136.2	198.0	18.7	8.6	58.5	137.8	199.1	19.5	8.9	59.0	370.3
March	138.2	199.2	19.3	8.9	59.0	137.2	199.2	19.2	8.8	59.0	370.4

(a) Trend estimates for September 1999 to February 2000 have been revised.

## LABOUR FORCE STATUS (AGED 15 AND OVER)—Northern Territory(a)

TREND.....

Month	Employed	Total	Total	Unemp-	Partic-	Civilian
	full time	employed	unemployed	loyment	ipation	population
	'000	'000	'000	%	%	aged 15
						and over
						'000
MALES						
<b>1999</b>						
January	46.9	53.9	2.3	4.1	78.2	71.8
February	47.0	54.1	2.3	4.0	78.3	72.0
March	46.9	54.2	2.2	4.0	78.2	72.1
April	46.7	54.1	2.2	3.8	77.8	72.3
May	46.6	54.0	2.1	3.7	77.3	72.5
June	46.4	53.8	1.9	3.5	76.8	72.7
July	46.5	53.7	1.8	3.3	76.3	72.8
August	46.6	53.6	1.8	3.2	76.0	72.9
September	46.5	53.4	1.9	3.4	75.8	72.9
October	46.2	53.0	2.0	3.7	75.4	73.0
November	45.7	52.5	2.2	4.1	74.9	73.0
December	45.2	51.9	2.4	4.4	74.3	73.0
<b>2000</b>						
January	44.8	51.5	2.4	4.5	73.8	73.1
February	44.6	51.3	2.5	4.6	73.5	73.2
March	44.6	51.3	2.4	4.5	73.4	73.3
FEMALES						
<b>1999</b>						
January	28.0	41.4	1.7	3.9	65.9	65.3
February	27.6	41.4	1.7	4.0	65.9	65.5
March	27.2	41.3	1.8	4.2	65.6	65.7
April	26.8	41.1	1.9	4.4	65.3	65.8
May	26.6	40.9	2.0	4.7	65.1	65.9
June	26.6	40.8	2.0	4.8	64.9	66.0
July	26.8	40.8	2.0	4.8	64.9	66.1
August	27.1	40.8	2.0	4.7	64.7	66.1
September	27.3	40.7	2.0	4.7	64.4	66.2
October	27.5	40.4	2.0	4.8	64.0	66.3
November	27.6	40.2	2.1	4.9	63.6	66.4
December	27.7	40.0	2.1	4.9	63.2	66.5
<b>2000</b>						
January	27.8	39.9	2.1	4.9	63.1	66.6
February	28.0	40.0	2.0	4.9	63.1	66.7
March	28.2	40.4	2.0	4.7	63.5	66.7
PERSONS						
<b>1999</b>						
January	74.9	95.3	4.0	4.0	72.4	137.1
February	74.6	95.5	4.0	4.0	72.4	137.5
March	74.1	95.5	4.0	4.1	72.2	137.8
April	73.5	95.2	4.1	4.1	71.9	138.1
May	73.1	94.9	4.1	4.1	71.5	138.4
June	73.0	94.7	4.0	4.0	71.1	138.7
July	73.3	94.5	3.9	3.9	70.9	138.9
August	73.6	94.4	3.8	3.9	70.6	139.0
September	73.8	94.1	3.9	4.0	70.4	139.2
October	73.6	93.4	4.1	4.2	70.0	139.3
November	73.3	92.6	4.3	4.4	69.5	139.4
December	72.9	91.9	4.5	4.6	69.0	139.5
<b>2000</b>						
January	72.6	91.5	4.5	4.7	68.7	139.7
February	72.6	91.3	4.5	4.7	68.5	139.9
March	72.8	91.7	4.4	4.6	68.7	140.0

(a) Trend estimates for September 1999 to February 2000 have been revised. Estimates for the most recent three months may be subject to significant revisions as data for later months become available.

## LABOUR FORCE STATUS (AGED 15 AND OVER)—Australian Capital Territory(a)

TREND.....

Month	Employed full time '000	Total employed '000	Total unemployed '000	Unemp- loyment rate %	Partic- ipation rate %	Civilian population aged 15 and over '000
MALES						
<b>1999</b>						
January	69.0	81.6	5.9	6.8	76.8	114.1
February	69.0	81.8	5.9	6.7	76.7	114.3
March	69.0	82.0	5.8	6.6	76.7	114.4
April	68.9	82.1	5.8	6.6	76.8	114.5
May	68.9	82.4	5.9	6.7	77.0	114.6
June	69.1	82.8	5.9	6.7	77.3	114.7
July	69.6	83.4	5.9	6.6	77.7	114.9
August	70.1	84.2	5.8	6.4	78.2	115.1
September	70.6	84.9	5.7	6.3	78.6	115.3
October	71.1	85.4	5.6	6.2	78.9	115.4
November	71.5	85.9	5.5	6.0	79.1	115.5
December	72.0	86.3	5.4	5.9	79.2	115.7
<b>2000</b>						
January	72.4	86.6	5.3	5.8	79.2	116.1
February	73.0	86.9	5.2	5.7	79.1	116.6
March	73.4	87.1	5.2	5.6	79.0	117.0
FEMALES						
<b>1999</b>						
January	47.2	74.8	4.1	5.2	65.0	121.6
February	47.2	75.1	4.2	5.3	65.2	121.7
March	47.1	75.2	4.3	5.4	65.3	121.8
April	47.0	75.3	4.2	5.2	65.2	121.9
May	47.3	75.7	4.0	5.0	65.3	122.0
June	48.0	76.2	3.8	4.8	65.6	122.0
July	48.8	76.8	3.8	4.7	66.0	122.1
August	49.6	77.4	3.9	4.8	66.5	122.2
September	50.2	77.9	4.1	5.0	67.0	122.3
October	50.5	78.3	4.2	5.1	67.4	122.4
November	50.7	78.5	4.2	5.1	67.5	122.6
December	50.9	78.6	4.2	5.1	67.5	122.7
<b>2000</b>						
January	51.2	78.6	4.1	4.9	67.3	122.9
February	51.6	78.5	4.0	4.8	67.0	123.1
March	52.0	78.3	3.9	4.7	66.7	123.2
PERSONS						
<b>1999</b>						
January	116.2	156.5	10.1	6.1	70.7	235.7
February	116.2	156.9	10.1	6.0	70.8	235.9
March	116.0	157.2	10.1	6.0	70.8	236.2
April	115.9	157.5	10.0	6.0	70.9	236.4
May	116.2	158.0	9.9	5.9	71.0	236.6
June	117.1	159.0	9.8	5.8	71.3	236.8
July	118.4	160.3	9.7	5.7	71.7	237.1
August	119.7	161.6	9.7	5.7	72.2	237.3
September	120.8	162.8	9.8	5.7	72.6	237.6
October	121.6	163.7	9.8	5.7	73.0	237.9
November	122.3	164.5	9.8	5.6	73.2	238.1
December	122.9	164.9	9.6	5.5	73.2	238.3
<b>2000</b>						
January	123.7	165.2	9.4	5.4	73.1	239.0
February	124.6	165.4	9.2	5.3	72.9	239.6
March	125.4	165.4	9.0	5.2	72.7	240.3

(a) Trend estimates for September 1999 to February 2000 have been revised. Estimates for the most recent three months may be subject to significant revisions as data for later months become available.



## EXPLANATORY NOTES

### INTRODUCTION

**1** This publication contains preliminary estimates of the civilian labour force derived from the Labour Force Survey component of the monthly population survey. Estimates for the current month are preliminary and subject to revision. Revised estimates for the current month and more detailed estimates will be published in *Labour Force, Australia* (Cat. no. 6203.0).

### MONTHLY POPULATION SURVEY

**2** The population survey is based on a multi-stage area sample of private dwellings (currently about 30,000 houses, flats, etc.) and a list sample of non-private dwellings (hotels, motels, etc.), and covers about 0.5% of the population of Australia. The information is obtained from the occupants of selected dwellings by specially trained interviewers. The interviews are generally conducted during the two weeks beginning on the Monday between the 6th and 12th of each month. The information obtained relates to the week before the interview (i.e. the reference week).

### TELEPHONE INTERVIEWING

**3** The ABS has introduced the use of telephone interviewing into the Labour Force Survey. Households selected for the Labour Force Survey are interviewed each month for 8 months, with one eighth of the sample being replaced each month. The first interview is conducted face-to-face. Subsequent interviews are conducted by telephone (if acceptable to the respondent). Telephone interviewing was phased in for each new sample group from August 1996 to February 1997.

**4** During the period of implementation, the new method produced different estimates than would have been obtained under the old methodology. The effect peaked in November 1996, when it is estimated that the published estimate of total employment was about 36,000 to 48,000 lower than would have been measured under the old methodology. The effect dissipated over the final months of implementation and was no longer discernible from February 1997. Therefore, the estimates for February 1997 and onwards are directly comparable to estimates for periods prior to August 1996.

### SCOPE OF SURVEY

**5** The Labour Force Survey includes all persons aged 15 and over except members of the permanent defence forces, certain diplomatic personnel of overseas governments customarily excluded from census and estimated populations, overseas residents in Australia, and members of non-Australian defence forces (and their dependants) stationed in Australia.

### COVERAGE

**6** In the Labour Force Survey, coverage rules are applied which aim to ensure that each person is associated with only one dwelling, and hence has only one chance of selection. The coverage rules are necessarily a balance between theoretical and operational considerations. Nevertheless, the chance of a person being enumerated at two separate dwellings in the survey is considered to be negligible.

### POPULATION BENCHMARKS

**7** Labour Force Survey estimates are calculated in such a way as to add up to independent estimates of the civilian population aged 15 and over (population benchmarks). From February 1999, labour force estimates have been compiled using benchmarks based on the results of the 1996 Census of Population and Housing. Small revisions were made to many of the historical estimates from January 1995 to January 1999.

### REVISION OF SERIES

**8** From April 1986, the definition of employed persons was changed to include persons who worked without pay between 1 and 14 hours per week in a family business or on a farm (i.e. contributing family workers). For further information, see paragraphs 36 and 37 of the Explanatory Notes to the February 1987 issue of *Labour Force, Australia* (Cat. no. 6203.0).

## EXPLANATORY NOTES

### SURVEY SAMPLE REDESIGN

**9** The Labour Force Survey sample was last reselected using information collected in the 1996 Census of Population and Housing.

**10** The bulk of the new sample was phased in over the period September 1997 to April 1998, with one eighth of this portion of the sample being introduced every month. The remainder of the sample (about 15% of the total), which covers less settled areas of Australia and non-private dwellings was rotated in full for New South Wales, Victoria, Tasmania, Northern Territory and Australian Capital Territory in September 1997, and for Queensland, South Australia and Western Australia in October 1997. Such a pattern of implementation means that any changes to labour force estimates due to differences between the two samples, or any other influences, were spread over the eight months.

**11** For further details, see *Information Paper: Labour Force Survey Sample Design* (Cat. no. 6269.0).

### RELIABILITY OF ESTIMATES

**12** Two types of error are possible in an estimate based on a sample survey: sampling error and non-sampling error.

*Sampling error* occurs because a sample, rather than the entire population, is surveyed. One measure of the likely difference resulting from not including all dwellings in the survey is given by the standard error. There are about two chances in three that a sample estimate will differ by less than one standard error from the figure that would have been obtained if all dwellings had been included in the survey, and about nineteen chances in twenty that the difference will be less than two standard errors. Standard errors of estimates for the latest month and of estimates of movements since the previous month are shown on pages 30 and 31. Standard errors of other estimates and other movements may be determined by using information in the Technical Notes in *Labour Force, Australia* (Cat. no. 6203.0).

*Non sampling error* arises from inaccuracies in collecting, recording and processing the data. Every effort is made to minimise reporting error by the careful design of questionnaires, intensive training and supervision of interviewers, and efficient data processing procedures.

### SEASONAL ADJUSTMENT AND TREND ESTIMATION

**13** Seasonally adjusted series are published in Tables 2, 5 and 12 to 17. Seasonal factors are reviewed annually to take account of each additional year's original data. The results of the latest review were used to compile the seasonally adjusted and trend estimates given in this publication. Information about the method of adjustment, and revised seasonally adjusted and trend estimates for all months from January 1998, were published in a feature article in the February 2000 issue of *Labour Force, Australia* (Cat. no. 6203.0).

**14** Seasonal adjustment is a means of removing the estimated effects of normal seasonal variation from the series so that the effects of other influences on the series can be more clearly recognised. Seasonal adjustment does not aim to remove the irregular or non-seasonal influences which may be present in any particular month. This means that month-to-month movements of the seasonally adjusted estimates may not be reliable indicators of trend behaviour. For example, irregular factors unrelated to the trend account for more than half the seasonally adjusted movement with the following frequency:

Employment: 6 in 10 monthly movements

Unemployment: 8 in 10 monthly movements

Unemployment rate: 7 in 10 monthly movements

Participation rate: 9 in 10 monthly movements.

## EXPLANATORY NOTES

### SEASONAL ADJUSTMENT AND TREND ESTIMATION *continued*

**15** The smoothing of seasonally adjusted series reduces the impact of the irregular component of the seasonally adjusted series, and creates trend estimates. These trend estimates are derived by applying a 13-term Henderson-weighted moving average to all months except the last six. The last six monthly trend estimates are obtained by applying surrogates of the Henderson average to the seasonally adjusted series. Trend series are used to analyse the underlying behaviour of the series over time. These are published in tables 3, 6 and 12 to 19.

**16** While this smoothing technique enables estimates to be produced for the latest month, it does result in revisions to the most recent months as additional observations become available. Generally, subsequent revisions become smaller, and after three months have a negligible impact on the series. There will also be revisions as a result of the annual review of seasonal factors.

**17** Trend estimates are published for the Northern Territory in table 18 and for the Australian Capital Territory in table 19. Unadjusted series for the two Territories have shown, historically, a high degree of variability, which can lead to considerable revisions to the seasonally adjusted estimates after each annual seasonal factor re-analysis. Seasonally adjusted estimates are not currently published for the two Territories. The most recent six months trend estimates are subject to revision. For the three most recent months, the revision may be relatively large. Inferences about trends drawn from smoothed seasonally adjusted (trend) estimates for months earlier than the latest three months are unlikely to be affected by month to month revisions. They may be affected by revision resulting from the annual re-analysis of seasonal factors.

**18** For further information, see *A Guide to Interpreting Time Series—Monitoring 'Trends': an Overview* (Cat. no. 1348.0) or contact the Assistant Director, Time Series Analysis on (02) 6252 6345.

### RELATED PUBLICATIONS

**19** Users may also wish to refer to *Labour Force, Australia* (Cat. no. 6203.0). This publication contains a detailed list of related publications which are available from ABS Bookshops.

**20** Current publications produced by the ABS are listed in the *Catalogue of Publications and Products* (Cat. no. 1101.0). The ABS also issues, on Tuesdays and Fridays, a *Release Advice* (Cat. no. 1105.0) which lists publications to be released in the next few days. The Catalogue and Release Advice are available from any ABS office.

### UNPUBLISHED STATISTICS

**21** As well as the statistics included in this and related publications, the ABS may have other relevant unpublished data available. Inquiries should be made to Mark Webb on 02 6252 6525 or to any ABS office.

### EFFECTS OF ROUNDING

**22** Estimates have been rounded and discrepancies may occur between sums of the component items and totals.

**23** Estimates of movement shown in this publication are obtained by taking the difference of unrounded estimates. The movement estimate is then rounded to one decimal place. Therefore where a discrepancy occurs between the reported movement and the difference of the rounded estimates, the reported movement will be more accurate.

### SYMBOLS AND OTHER USAGES

- \* subject to sampling variability too high for most practical uses. See the Technical Notes in Cat. no. 6203.0 for more details.
- .. not applicable
- r revised
- pts percentage points

## GLOSSARY

<b>Actively looking for work</b>	Includes writing, telephoning or applying in person to an employer for work; answering an advertisement for a job; checking factory noticeboards or the touchscreens at the Centrelink offices; being registered with Centrelink as a jobseeker; checking or registering with any other employment agency; advertising or tendering for work; and contacting friends or relatives.
<b>Attending school</b>	Persons aged 15 to 19 enrolled full time at secondary or high schools in the reference week.
<b>Attending tertiary educational institution full time</b>	Persons aged 15 to 24 enrolled full time at a TAFE college, university, or other educational institution in the reference week.
<b>Employed</b>	Persons aged 15 and over who, during the reference week: <ul style="list-style-type: none"><li>■ worked for one hour or more for pay, profit, commission or payment in kind in a job or business, or on a farm (comprising employees, employers and own account workers); or</li><li>■ worked for one hour or more without pay in a family business or on a farm (i.e. contributing family workers); or</li><li>■ were employees who had a job but were not at work and were:<ul style="list-style-type: none"><li>■ on paid leave,</li><li>■ on leave without pay for less than four weeks up to the end of the reference week,</li><li>■ stood down without pay because of bad weather or plant breakdown at their place of employment for less than four weeks up to the end of the reference week,</li><li>■ on strike or locked out,</li><li>■ on workers' compensation and expected to be returning to their job, or</li><li>■ receiving wages or salary while undertaking full-time study; or</li></ul></li><li>■ were employers, own account workers or contributing family workers who had a job, business or farm, but were not at work.</li></ul>
<b>Full-time workers</b>	Employed persons who usually worked 35 hours or more a week (in all jobs) and those who, although usually working less than 35 hours a week, worked 35 hours or more during the reference week
<b>Labour force</b>	For any group, persons who were employed or unemployed, as defined.
<b>Labour force status</b>	A classification of the civilian population aged 15 and over into employed, unemployed or not in the labour force, as defined. The definitions conform closely to the international standard definitions adopted by the International Conferences of Labour Statisticians.
<b>Not in the labour force</b>	Persons who were not in the categories employed or unemployed as defined.
<b>Participation rate</b>	For any group, the labour force expressed as a percentage of the civilian population aged 15 and over in the same group.
<b>Part-time workers</b>	Employed persons who usually worked less than 35 hours a week and who did so during the reference week.
<b>Seasonally adjusted series</b>	A time series of estimates with the estimated effects of normal seasonal variation removed. See Explanatory Notes 13 to 14 for more detail.
<b>Trend series</b>	A smoothed seasonally adjusted series of estimates. See Explanatory Notes 15 to 17 for more detail.

## G L O S S A R Y

<b>Unemployed</b>	Persons aged 15 and over who were not employed during the reference week, and: <ul style="list-style-type: none"><li>■ had actively looked for full-time or part-time work at any time in the four weeks up to the end of the reference week and:<ul style="list-style-type: none"><li>■ were available for work in the reference week, or would have been available except for temporary illness (i.e. lasting for less than four weeks to the end of the reference week), or</li><li>■ were waiting to start a new job within four weeks from the end of the reference week and would have started in the reference week if the job had been available then; or</li></ul></li><li>■ were waiting to be called back to a full-time or part-time job from which they had been stood down without pay for less than four weeks up to the end of the reference week (including the whole of the reference week) for reasons other than bad weather or plant breakdown.</li></ul>
<b>Unemployed looking for first full-time job</b>	Unemployed persons looking for full-time work (as defined above) who had never worked full time for two weeks or more
<b>Unemployed looking for full-time work</b>	Unemployed persons who actively looked for full-time work, or were to resume a full-time job from which they had been stood down.
<b>Unemployed looking for part-time work</b>	Unemployed persons who had actively looked for part-time work only, or were to resume a part-time job from which they had been stood down.
<b>Unemployment rate</b>	For any group, the number of unemployed persons expressed as a percentage of the labour force in the same group.
<b>Unemployment to population ratio</b>	For any group, the number of unemployed persons expressed as a percentage of the civilian population in the same group.

## STANDARD ERRORS

The estimates in this publication are based on information gained from the occupants of a sample survey of dwellings. Because the entire population is not surveyed, the published estimates are subject to sampling error. The most common way of quantifying such sampling error is to calculate the standard error for the published estimate or statistic.

### LEVEL ESTIMATES

To illustrate, let us say the published level estimate for employed persons aged 15 to 19 is 500,000. The calculated standard error in this case is 8,700. The standard error is then used to interpret the level estimate of 500,000. For instance, the standard error of 8,700 indicates that:

- There are approximately two chances in three that the real value falls within the range 491,300 to 508,700 (500,000 + or - 8,700)
- There are approximately nineteen chances in twenty that the real value falls within the range 482,600 to 517,400 (500,000 + or - 17,400).

The real value in this case is the result we would obtain if we could enumerate the total population.

The following tables show the standard errors for this month's level estimates.

	EMPLOYED.....			UNEMPLOYED.....			Labour force	Not in labour force	Unemployment rate	Participation rate
	Full time	Part time	Total	Looking for f/t work	Looking for p/t work	Total				
	'000	'000	'000	'000	'000	'000				
NSW	18.5	10.0	22.0	5.2	3.9	5.8	23.0	16.7	0.2	0.4
Vic.	13.8	8.2	16.4	4.2	3.2	4.8	17.1	12.6	0.2	0.5
Qld	10.8	7.3	12.1	4.3	2.7	4.8	12.6	9.9	0.3	0.4
SA	5.0	3.5	5.7	2.0	1.2	2.2	5.9	5.0	0.3	0.5
WA	5.4	4.0	6.0	2.2	1.5	2.5	6.1	4.9	0.3	0.4
Tas.	1.8	1.3	2.1	0.8	0.5	0.9	2.2	1.9	0.4	0.6
NT	1.3	0.8	1.4	0.4	0.2	0.4	1.4	1.0	0.4	1.0
ACT	1.8	1.1	2.0	0.5	0.4	0.6	2.1	1.4	0.4	0.9
Males	21.3	9.6	23.1	7.2	4.2	7.8	24.3	15.2	0.1	0.3
Females	15.6	14.1	20.0	6.1	5.1	7.3	20.8	18.8	0.2	0.3
Persons	28.0	16.0	36.3	8.7	6.0	9.9	39.0	24.5	0.1	0.3

	NUMBER OF UNEMPLOYED PERSONS.....					UNEMPLOYMENT RATE.....				
	Aged 15-19 looking for f/t work	Aged 20 and over looking for f/t work	Total looking for f/t work	Looking for p/t work	Total	Aged 15-19 looking for f/t work	Aged 20 and over looking for f/t work	Total looking for f/t work	Looking for p/t work	Total
	'000	'000	'000	'000	'000	pts	pts	pts	pts	pts
NSW	2.5	5.0	5.2	3.9	5.8	2.7	0.2	0.2	0.5	0.2
Vic.	2.0	4.0	4.2	3.2	4.8	3.4	0.2	0.2	0.5	0.2
Qld	1.8	4.0	4.3	2.7	4.8	2.7	0.3	0.3	0.6	0.3
SA	0.9	1.9	2.0	1.2	2.2	3.9	0.4	0.4	0.6	0.3
WA	1.0	2.1	2.2	1.5	2.5	2.9	0.3	0.3	0.5	0.3
Tas.	0.4	0.7	0.8	0.5	0.9	4.3	0.5	0.5	0.8	0.4
NT	0.2	0.4	0.4	0.2	0.4	4.5	0.5	0.5	1.2	0.4
ACT	0.3	0.5	0.5	0.4	0.6	5.9	0.4	0.4	1.1	0.4
Males	3.3	6.9	7.2	4.2	7.8	1.8	0.2	0.2	0.6	0.1
Females	2.8	5.8	6.1	5.1	7.3	2.5	0.3	0.3	0.3	0.2
Persons	4.1	8.3	8.7	6.0	9.9	1.4	0.1	0.1	0.2	0.1

## STANDARD ERRORS *continued*

### MOVEMENT ESTIMATES

The following example illustrates how to use the standard error to interpret a movement estimate. Let us say that one month the published level estimate for females employed part time in Australia is 1,390,000; the next month the published level estimate is 1,400,000. The calculated standard error for the movement estimate is 13,000. The standard error is then used to interpret the published movement estimate of 10,000. For instance, the standard error of 13,000 indicates that:

- There are approximately two chances in three that the real movement over the two month period falls within the range -3,000 to 23,000 (10,000 + or - 13,000)
- There are approximately nineteen chances in twenty that the real movement falls within the range -16,000 to 36,000 (10,000 + or - 26,000).

The following tables show the standard errors for this month's movement estimates.

	EMPLOYED.....			UNEMPLOYED.....			Labour force	Not in labour force	Unemployment rate	Participation rate
	Full time	Part time	Total	Looking for f/t work	Looking for p/t work	Total				
	'000	'000	'000	'000	'000	'000				
NSW	9.9	6.8	10.9	4.0	2.9	4.5	11.1	9.4	0.1	0.2
Vic.	7.5	5.3	8.3	3.1	2.4	3.5	8.5	7.1	0.1	0.2
Qld	6.7	4.7	7.5	3.0	2.0	3.3	7.7	6.2	0.2	0.3
SA	3.1	2.3	3.5	1.4	1.0	1.6	3.6	3.1	0.2	0.3
WA	3.9	2.8	4.3	1.7	1.2	1.9	4.4	3.5	0.2	0.3
Tas.	1.2	0.9	1.4	0.6	0.4	0.6	1.4	1.3	0.3	0.4
NT	1.1	0.6	1.2	0.4	0.3	0.4	1.2	0.9	0.4	0.9
ACT	1.0	0.7	1.1	0.4	0.3	0.5	1.1	0.8	0.3	0.5
Males	14.0	7.1	14.7	5.6	3.2	5.9	15.1	10.7	0.1	0.2
Females	10.9	10.0	13.4	4.7	4.0	5.6	13.8	12.9	0.1	0.2
Persons	16.2	11.2	18.0	6.6	4.6	7.4	18.5	15.2	0.1	0.1

	NUMBER OF UNEMPLOYED PERSONS.....					UNEMPLOYMENT RATE.....				
	Aged 15-19 looking for f/t work	Aged 20 and over looking for f/t work	Total looking for f/t work	Looking for p/t work	Total	Aged 15-19 looking for f/t work	Aged 20 and over looking for f/t work	Total looking for f/t work	Looking for p/t work	Total
	'000	'000	'000	'000	'000	pts	pts	pts	pts	pts
NSW	2.1	3.8	4.0	2.9	4.5	1.9	0.2	0.2	0.4	0.1
Vic.	1.6	2.9	3.1	2.4	3.5	2.5	0.2	0.2	0.4	0.1
Qld	1.5	2.9	3.0	2.0	3.3	2.2	0.2	0.2	0.4	0.2
SA	0.8	1.4	1.4	1.0	1.6	2.9	0.3	0.3	0.5	0.2
WA	0.9	1.6	1.7	1.2	1.9	2.3	0.2	0.2	0.4	0.2
Tas.	0.3	0.5	0.6	0.4	0.6	3.5	0.4	0.4	0.6	0.3
NT	0.2	0.4	0.4	0.3	0.4	5.6	0.5	0.5	1.4	0.4
ACT	0.2	0.4	0.4	0.3	0.5	4.6	0.3	0.3	0.8	0.3
Males	2.8	5.3	5.6	3.2	5.9	1.3	0.1	0.1	0.5	0.1
Females	2.4	4.4	4.7	4.0	5.6	1.9	0.2	0.2	0.2	0.1
Persons	3.3	6.2	6.6	4.6	7.4	1.0	0.1	0.1	0.2	0.1

# WHAT IF...? REVISIONS TO TREND ESTIMATES

## EFFECT OF NEW SEASONALLY ADJUSTED ESTIMATES ON TREND ESTIMATES

Each time new seasonally adjusted estimates become available, trend estimates are revised (see paragraphs 13 and 14 of Explanatory Notes).

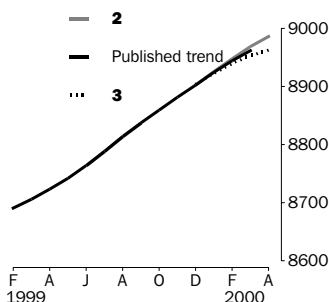
### TREND REVISIONS

The examples in the tables below show four illustrative scenarios and the consequent revisions to previous trend estimates of employment and unemployment rate.

- 1** The April seasonally adjusted estimate is the same as the March estimate.
- 2** The April seasonally adjusted estimate is higher than the March estimate by:
  - +0.31% for employment
  - +2.0% for the unemployment rate
- 3** The April seasonally adjusted estimate is lower than the March estimate by:
  - -0.31% for employment
  - -2.0% for the unemployment rate
- 4** The April seasonally adjusted estimate results in a revised March trend estimate which is identical to the new April trend estimate.

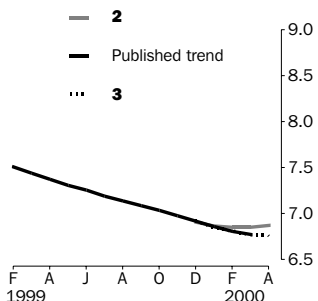
The percentage changes of 0.31% and 2.0% were chosen because they represent the average absolute monthly percentage changes in employment and the unemployment rate respectively.

### EMPLOYMENT ('000)



		WHAT IF NEXT MONTH'S SEASONALLY ADJUSTED ESTIMATE IS:				
		<b>1</b>	<b>2</b>	<b>3</b>	<b>4</b>	
		8 970.7	8 998.8	8 942.7	8 880.6	
		<i>i.e. the same as Mar 2000</i>	<i>i.e. rises by 0.31%</i>	<i>i.e. falls by 0.31%</i>	<i>i.e. same trend for Mar &amp; Apr</i>	
TREND AS PUBLISHED						
2000	January	8 925.0	8 924.7	8 925.9	8 923.4	8 920.6
	February	8 944.9	8 944.5	8 948.6	8 940.3	8 931.1
	March	8 962.0	8 961.9	8 969.8	8 954.1	8 936.8
	April (new)	—	8 974.7	8 986.6	8 962.9	8 936.8

### UNEMPLOYMENT RATE (%)



		WHAT IF NEXT MONTH'S SEASONALLY ADJUSTED ESTIMATE IS:				
		<b>1</b>	<b>2</b>	<b>3</b>	<b>4</b>	
		6.9	7.0	6.7	6.8	
		<i>i.e. the same as Mar 2000</i>	<i>i.e. rises by 2.0%</i>	<i>i.e. falls by 2.0%</i>	<i>i.e. same trend for Mar &amp; Apr</i>	
TREND AS PUBLISHED						
2000	January	6.9	6.9	6.9	6.9	6.9
	February	6.8	6.8	6.9	6.8	6.8
	March	6.8	6.8	6.9	6.8	6.8
	April (new)	—	6.8	6.9	6.8	6.8









## FOR MORE INFORMATION...

- INTERNET* **www.abs.gov.au** the ABS web site is the best place to start for access to summary data from our latest publications, information about the ABS, advice about upcoming releases, our catalogue, and Australia Now—a statistical profile.
- LIBRARY* A range of ABS publications is available from public and tertiary libraries Australia-wide. Contact your nearest library to determine whether it has the ABS statistics you require, or visit our web site for a list of libraries.
- CPI INFOLINE* For current and historical Consumer Price Index data, call 1902 981 074 (call cost 75c per minute).
- DIAL-A-STATISTIC* For the latest figures for National Accounts, Balance of Payments, Labour Force, Average Weekly Earnings, Estimated Resident Population and the Consumer Price Index call 1900 986 400 (call cost 75c per minute).

### INFORMATION SERVICE

Data which have been published and can be provided within five minutes are free of charge. Our information consultants can also help you to access the full range of ABS information—ABS user pays services can be tailored to your needs, time frame and budget. Publications may be purchased. Specialists are on hand to help you with analytical or methodological advice.

- PHONE* **1300 135 070**
- EMAIL* **client.services@abs.gov.au**
- FAX* 1300 135 211
- POST* Client Services, ABS, GPO Box 796, Sydney 1041

## WHY NOT SUBSCRIBE?

ABS subscription services provide regular, convenient and prompt deliveries of ABS publications and products as they are released. Email delivery of monthly and quarterly publications is available.

- PHONE* 1300 366 323
- EMAIL* subscriptions@abs.gov.au
- FAX* 03 9615 7848
- POST* Subscription Services, ABS, GPO Box 2796Y, Melbourne 3001



2620200003007

ISSN 1031-038X

RRP \$18.00

© Commonwealth of Australia 2000

Produced by the Australian Bureau of Statistics